

Technical Data Sheet

APC Conjugated Human Mesothelin (E296-G580) Protein (C-Fc)

Catalog Number: 801803, 801804
Size: 25 ug, 100 ug
Target Name: Mesothelin, MPF, MSLN
Regulatory Status: RUO

Product Details

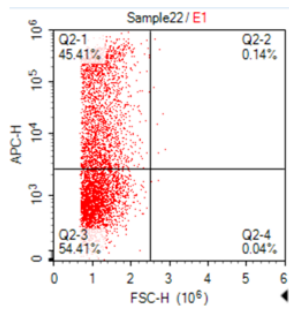
Application: FC
Format: Liquid, APC
Expression Host: HEK293
Species: Human
Sources: Human Mesothelin protein (Accession # AAH09272.1) (Glu296-Gly580) with C-terminus Fc tag is expressed in HEK293 cells and conjugated to APC.
Accession Number: Q13421
Molecular Weight: The protein has a predicted molecular weight of 60kDa. Under DTT-reducing conditions, it migrates at approximately 65 kDa on SDS-PAGE prior to conjugation.
Affinity Tag: C-Fc
Formulation: 1xPBS buffer, pH7.4, 0.09% NaN₃ with a carrier protein
Endotoxin level: Not tested
Protein Concentration: 25µg size is bottled at 0.1mg/mL concentration. 100 µg size is bottled at lot specific concentration.
Storage and Handling: Briefly centrifuge the vial upon receipt. An unopened vial may be stored at 2–8°C for up to six months.

Background Information

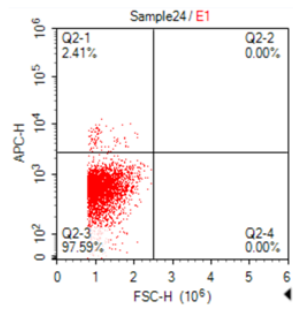
Mesothelin (MSLN), also known as CAK1, is a 70 kDa cell-surface protein cleaved into MPF (30 kDa) and mesothelin (40 kDa). MPF acts as a cytokine, while mesothelin is membrane-bound via glycosylphosphatidylinositol. It is overexpressed in various cancers, including mesotheliomas and ovarian cancer, and interacts with MUC16/CA-125, a cancer biomarker. Elevated mesothelin levels in serum make it a target for diagnostics and therapies, such as the recombinant immunotoxin SS1P, which has shown promise in clinical trials.

Product Data

A: MSLN CAR-transfected
Stained with APC-Mesothelin-Fc



B: Mock-transfected
Stained with APC-Mesothelin-Fc



CHO cells transfected with either Mesothelin CAR or Mock plasmid were stained with APC conjugated Mesothelin (C-Fc) protein at 4ug_test