

Human PD1 (CD279) Protein (C-Fc-Avi)

Catalog Number:	803101, 803102
Size:	25 ug, 100 ug
Target Name:	PD1, PDCD1, CD279, SLEB2
Regulatory Status:	RUO

PRODUCT DETAILS

Application:	ELISA, BLI
Format:	Liquid, Purified
Expression Host:	HEK293
Species:	Human
Sources:	Human PD-1 protein (NP_005009.2) (Leu25-Gln167) with C-terminus Fc-Avi tag is expressed in HEK293 cells
Accession Number:	Q15116
Molecular Weight:	The protein has a predicted molecular weight of 44 kDa. Under DTT-reducing conditions, it migrates at approximately 60 kDa on SDS-PAGE.
Affinity Tag:	C-Fc-Avi
Purity:	>95% based on SDS-PAGE under reducing condition
Formulation:	1xPBS buffer, pH7.4, 0.22 µm filtered
Endotoxin level:	Not tested
Protein Concentration:	25µg size is bottled at 0.2mg/mL concentration. 100 µg size is supplied at a lot-specific concentration.
Storage and Handling:	Briefly centrifuge the vial upon receipt. An unopened vial can be stored at 4°C for up to 2 weeks, or at -20°C or below for up to six months. The protein may be further diluted to 0.1 mg/mL using 0.22 µm-filtered PBS buffer (pH 7.4). For long-term storage, the diluted stock solution should be aliquoted and stored at ≤ -70°C to minimize freeze-thaw cycles. If additional dilution is required, carrier proteins such as FBS or BSA should be added to maintain protein stability.

BACKGROUND INFORMATION

CD279, also known as Programmed Cell Death Protein 1 (PD-1), is a crucial immune checkpoint receptor that regulates T cell activation and prevents autoimmunity. This transmembrane protein plays a pivotal role in maintaining immune homeostasis by delivering inhibitory signals that dampen excessive immune responses.

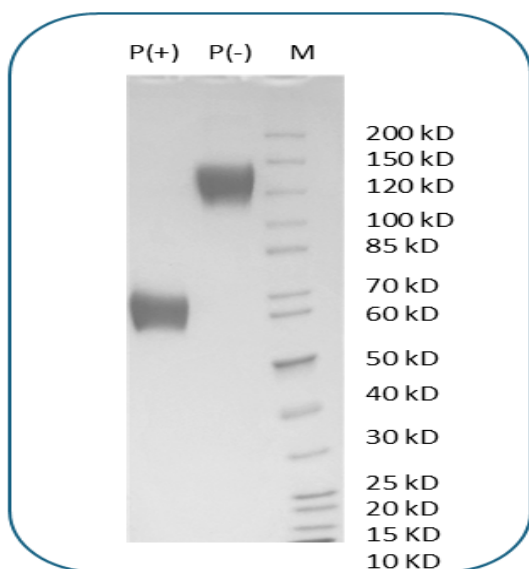
PD-1 is a type I transmembrane glycoprotein belonging to the immunoglobulin superfamily. It contains an extracellular immunoglobulin variable (IgV)-like domain, a transmembrane region, and an intracellular tail with two tyrosine-based signaling motifs: an immunoreceptor tyrosine-based inhibitory motif (ITIM) and an immunoreceptor tyrosine-based switch motif (ITSM). When

engaged, these motifs recruit phosphatases that inhibit T-cell receptor signaling, effectively suppressing T-cell activation, proliferation, and cytokine production.

PD-1 interacts with two primary ligands: PD-L1 (B7-H1/CD274) and PD-L2 (B7-DC/CD273). PD-L1 is widely expressed on various cell types, including tumor cells, antigen-presenting cells, and non-hematopoietic tissues, while PD-L2 expression is more restricted to antigen-presenting cells. These ligand-receptor interactions serve as critical brakes on immune responses. In cancer, tumor cells exploit the PD-1/PD-L1 pathway to evade immune surveillance. By upregulating PD-L1 expression, tumors effectively "turn off" infiltrating T-cells, preventing effective anti-tumor immunity. This mechanism contributes to tumor progression and immune escape across multiple cancer types.

The discovery of PD-1's role in cancer has revolutionized oncology through immune checkpoint inhibitors. Monoclonal antibodies targeting PD-1 (pembrolizumab, nivolumab) or PD-L1 (atezolizumab, durvalumab) block this inhibitory pathway, reinvigorating anti-tumor T-cell responses. These therapies have demonstrated remarkable success in treating melanoma, non-small cell lung cancer, renal cell carcinoma, and numerous other malignancies, fundamentally transforming cancer treatment paradigms and offering durable responses in previously untreatable cancers.

PRODUCT DATA



Human PD-1 protein (C-Fc-Avi) on SDS-PAGE under reducing condition (P+) and non-reducing condition (P-). The gel was stained for 1 hour with BlinkBlue (catalog 700102). The purity of this protein appears to be greater than 95%□

This product is supplied subject to the terms and conditions at www.innocyto.com/web/terms.php and may only be used as provided in the stated terms. Products are for Research Use Only.