

PE Human PD1 (CD279) Protein (C-Fc)

Catalog Number:	803301, 803302
Size:	25 ug, 100 ug
Target Name:	PD1, PDCD1, CD279, SLEB2
Regulatory Status:	RUO

PRODUCT DETAILS

Application:	Flow Cytometry
Format:	Liquid, PE
Expression Host:	HEK293
Species:	Human
Sources:	Human PD-1 protein (NP_005009.2) (Leu25-Gln167) with C-terminus Fc tag is expressed in HEK293 cells and conjugated to PE
Accession Number:	Q15116
Molecular Weight:	The protein has a predicted molecular weight of 44 kDa. Under DTT-reducing conditions, it migrates at approximately 60 kDa on SDS-PAGE prior to conjugation.
Affinity Tag:	C-Fc
Formulation:	1xPBS buffer, pH7.4, 0.09% NaN3 with a carrier protein
Endotoxin level:	Not tested
Protein Concentration:	25µg size is bottled at 0.1mg/mL concentration. 100 µg size is bottled at lot specific concentration.
Storage and Handling:	Briefly centrifuge the vial upon receipt. An unopened vial may be stored at 2-8°C for up to six months.

BACKGROUND INFORMATION

CD279, also known as Programmed Cell Death Protein 1 (PD-1), is a crucial immune checkpoint receptor that regulates T cell activation and prevents autoimmunity. This transmembrane protein plays a pivotal role in maintaining immune homeostasis by delivering inhibitory signals that dampen excessive immune responses.

PD-1 is a type I transmembrane glycoprotein belonging to the immunoglobulin superfamily. It contains an extracellular immunoglobulin variable (IgV)-like domain, a transmembrane region, and an intracellular tail with two tyrosine-based signaling motifs: an immunoreceptor tyrosine-based inhibitory motif (ITIM) and an immunoreceptor tyrosine-based switch motif (ITSM). When engaged, these motifs recruit phosphatases that inhibit T-cell receptor signaling, effectively suppressing T-cell activation, proliferation, and cytokine production.

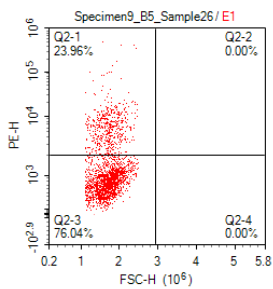
PD-1 interacts with two primary ligands: PD-L1 (B7-H1/CD274) and PD-L2 (B7-DC/CD273). PD-L1 is widely expressed on various cell types, including tumor cells, antigen-presenting cells, and non-hematopoietic tissues, while PD-L2 expression is more restricted to

antigen-presenting cells. These ligand-receptor interactions serve as critical brakes on immune responses. In cancer, tumor cells exploit the PD-1/PD-L1 pathway to evade immune surveillance. By upregulating PD-L1 expression, tumors effectively "turn off" infiltrating T-cells, preventing effective anti-tumor immunity. This mechanism contributes to tumor progression and immune escape across multiple cancer types.

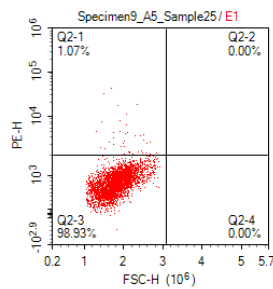
The discovery of PD-1's role in cancer has revolutionized oncology through immune checkpoint inhibitors. Monoclonal antibodies targeting PD-1 (pembrolizumab, nivolumab) or PD-L1 (atezolizumab, durvalumab) block this inhibitory pathway, reinvigorating anti-tumor T-cell responses. These therapies have demonstrated remarkable success in treating melanoma, non-small cell lung cancer, renal cell carcinoma, and numerous other malignancies, fundamentally transforming cancer treatment paradigms and offering durable responses in previously untreatable cancers.

PRODUCT DATA

**A: PD1 CAR-transfected
Stained with PE-PD1-Fc**



**B: Mock-transfected
Stained with PE-PD1-Fc**



CHO cells transfected with either PD1 CAR or Mock plasmid were stained with PE conjugated PD1 (C-Fc) protein at 1ug_test

This product is supplied subject to the terms and conditions at www.innocyto.com/web/terms.php and may only be used as provided in the stated terms. Products are for Research Use Only.