

## Technical Data Sheet

### iF647 Anti-Human CD11b

**Catalog Number:** 100403, 100404

**Size:** 25 tests, 100 tests

**Target Name:** CD11b, Integrin  $\alpha$ M chain, C3biR, CR3, Mac-1, Mo1, ITGAM

**Regulatory Status:** RUO

#### Product Details

---

**Clone:** 011bAB

**Application:** FC

**Reactivity:** Human

**Format:** iF647

**Isotype:** Rabbit IgG

**Antibody Type:** Monoclonal

**Formulation:** Phosphate-buffered solution, pH 7.2, containing 0.09% sodium azide and 0.2% (w/v) BSA

**Protein Concentration:** Supplied at a lot-specific concentration.

**Storage and Handling:** The antibody solution should be stored undiluted between 2°C and 8°C, and protected from prolonged exposure to light. Do not freeze.

**Recommended Usage:** For flow cytometric staining, it is recommended to use 5  $\mu$ L of this reagent per 0.5-1.0 million cells in a 100  $\mu$ L volume. Optimal reagent performance should be determined by titration for each specific application.

**Excitation Laser:** Red Laser (633 nm)

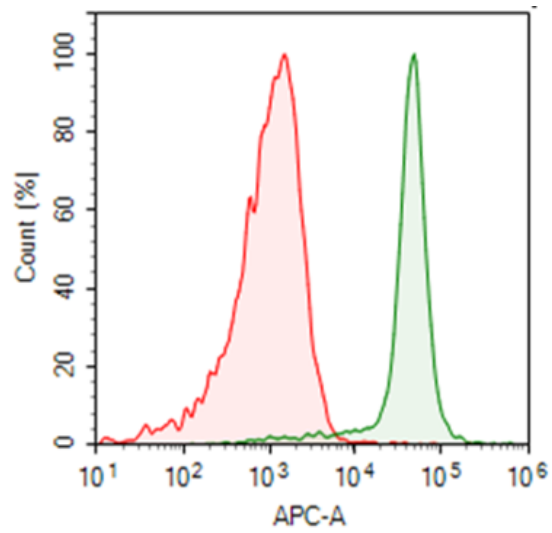
#### Background Information

---

Integrin Alpha M (ITGAM); the alpha subunit of Mac-1 (Macrophage-1 antigen), the CR3 complement receptor which consists of CD11b and CD18. CR3 is a human cell surface receptor, found on polymorphonuclear leukocytes (mostly neutrophils), NK cells, and mononuclear phagocytes like macrophages, which is capable of recognizing and binding to many molecules found on the surfaces of invading bacteria. Binding to the receptor causes phagocytosis and destruction of the foreign cell.

#### Product Data

---



Human peripheral blood monocytes stained with IF647 anti-human CD11b clone 011bAB