

Technical Data Sheet

Anti-Human CD127

Catalog Number: 104801, 104802

Size: 100 ug, 500 ug

Target Name: CD127, IL-7 receptor γ chain, IL-7R γ

Regulatory Status: RUO

Product Details

Clone: 127AB

Application: FC

Reactivity: Human

Format: Purified

Isotype: Rabbit IgG

Antibody Type: Monoclonal

Formulation: Phosphate-buffered solution, pH 7.2, containing 0.09% sodium azide

Protein Concentration: 0.5 mg/mL

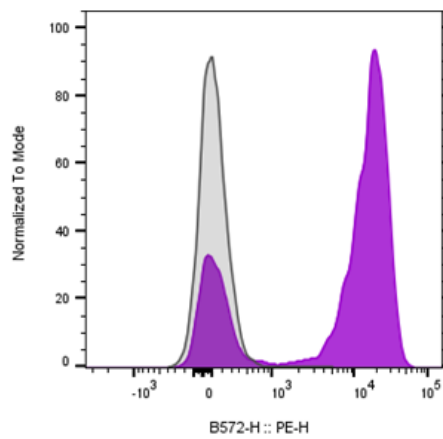
Storage and Handling: The antibody solution should be stored between 2°C and 8°C

Recommended Usage: For flow cytometric staining, it is recommended to use less than 0.2 ug of this reagent per 0.5-1.0 million cells in a 100 μ L volume. Optimal reagent performance should be determined by titration for each specific application

Background Information

The interleukin-7 receptor is a protein found on the surface of cells. It is made up of two different smaller protein chains - i.e. it is a heterodimer, and consists of two subunits, interleukin-7 receptor- γ (CD127) and common- γ chain receptor (CD132). The common- γ chain receptors is shared with various cytokines, including interleukin-2, -4, -9, and -15. Interleukin-7 receptor is expressed on various cell types, including naive and memory T cells and many others. Interleukin-7 receptor has been shown to play a critical role in the development of immune cells called lymphocytes.

Product Data



Human peripheral blood lymphocytes stained with either Anti-Human CD127 clone 127AB (purple histogram) or an isotype control (gray histogram), followed by PE conjugated anti-rabbit IgG.