

## Technical Data Sheet

### Human PD-L2 (C-His-Avi)

**Catalog Number:** 813101, 813102

**Size:** 25 ug, 100 ug

**Target Name:** PDL2, , Butyrophilin B7-DC, CD273, PDCD1 ligand 2

**Regulatory Status:** RUO

#### Product Details

---

**Application:** ELISA, BLI

**Format:** Liquid, Purified

**Expression Host:** CHO

**Species:** Human

**Sources:** Recombinant Human PD-L2 (Leu20-Pro219) with C-terminus His-Avi-tag is expressed in CHO cell.

**Accession Number:** Q9BQ51

**Molecular Weight:** The protein has a predicted molecular weight of 26.2 kDa. Under DTT-reducing conditions, it migrates at approximately 35 kDa on SDS-PAGE.

**Affinity Tag:** C-His-Avi

**Purity:** >95% based on SDS-PAGE under reducing condition

**Formulation:** 1xPBS buffer, pH7.4, 0.22 µm filtered

**Endotoxin level:** Not tested

**Protein Concentration:** 25µg size is bottled at 0.2mg/mL concentration. 100 µg size is supplied at a lot-specific concentration.

**Storage and Handling:** Briefly centrifuge the vial upon receipt. An unopened vial can be stored at 4°C for up to 2 weeks, or at -20°C or below for up to six months. The protein may be further diluted to 0.1 mg/mL using 0.22 µm-filtered PBS buffer (pH 7.4). For long-term storage, the diluted stock solution should be aliquoted and stored at ≤ -70°C to minimize freeze-thaw cycles. If additional dilution is required, carrier proteins such as FBS or BSA should be added to maintain protein stability.

#### Background Information

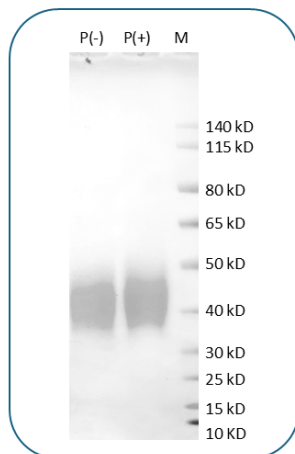
---

Programmed death ligand 2 (PD-L2, also known as B7-DC or CD273) is a type I transmembrane protein and a member of the B7 family, containing one V-like and one C-like Ig domain in its extracellular region. It is mainly expressed on antigen-presenting cells, such as dendritic cells, macrophages, and B cells, and its expression can be induced by IFN- $\gamma$  or LPS. PD-L2 serves as a high-affinity ligand for PD-1, a receptor expressed on activated T and B cells, and inhibits T cell activation, proliferation, and cytokine production, thus contributing to immune tolerance and evasion, particularly in tumors and autoimmunity. PD-L2 also plays a PD-1-independent role in asthma by regulating airway hyperresponsiveness through IL-12 production and binding to an alternative receptor, RGMb, involved in respiratory immune regulation. Its dual functions in both PD-1-dependent and independent pathways highlight PD-L2 as a critical immunoregulatory molecule

and a potential therapeutic target in cancer, autoimmunity, and allergic diseases.

## Product Data

---



Human PD-L2 (C-His-Avi) on SDS-PAGE under reducing condition (P+) and non-reducing condition (P-). The gel was stained for 1 hour with BlinkBlue (catalog 700102). The purity of this protein appears to be greater than 95%.