

## Anti-Human CD20 Antibody

<b>Catalog Number:</b>	105601, 105602
<b>Size:</b>	100 ug, 500 ug
<b>Target Name:</b>	CD20, MS4A-1, MS4A1
<b>Regulatory Status:</b>	RUO

### PRODUCT DETAILS

---

<b>Clone:</b>	2H7
<b>Application:</b>	Flow Cytometry
<b>Reactivity:</b>	Human
<b>Format:</b>	Purified
<b>Isotype:</b>	Mouse IgG2b
<b>Antibody Type:</b>	Monoclonal
<b>Formulation:</b>	Phosphate-buffered solution, pH 7.2, containing 0.09% sodium azide
<b>Protein Concentration:</b>	0.5 mg/mL
<b>Storage and Handling:</b>	The antibody solution should be stored between 2°C and 8°C
<b>Recommended Usage:</b>	For flow cytometric staining, it is recommended to use less than 0.25 µg of this reagent per 0.5-1.0 million cells in a 100 µL volume. Optimal reagent performance should be determined by titration for each specific application
<b>Isotype Control:</b>	301601
<b>RRID:</b>	AB_3738682

### BACKGROUND INFORMATION

---

CD20 is a B cell-specific surface molecule that plays a key role in B cell activation and regulation and is best known as one of the most successful therapeutic targets in immunology and oncology. It is expressed on B cells from the late pre-B cell stage through mature and memory B cells but is absent on early pro-B cells and terminally differentiated plasma cells. This expression pattern makes CD20 an ideal marker for identifying and targeting the majority of circulating and tissue-resident B cells.

Structurally, CD20 is a small, non-glycosylated integral membrane protein with four transmembrane helices, two extracellular loops, and intracellular N- and C-terminal domains. Unlike many CD molecules, CD20 does not belong to the immunoglobulin superfamily and lacks a long cytoplasmic signaling motif. Instead, CD20 is thought to function as part of a membrane complex involved in ion transport, particularly calcium flux, which is critical for B cell activation and proliferation. Functionally, CD20 contributes to the regulation of B cell receptor (BCR) signaling by influencing calcium entry following antigen engagement. Through modulation of intracellular calcium levels, CD20 affects B cell activation, cell cycle progression, and differentiation. While CD20 is not essential for B cell development, it plays an important role in optimizing B cell responses during immune activation. A notable feature of CD20 is that it does not have a clearly defined natural ligand. Its activity appears to be mediated through homotypic interactions,

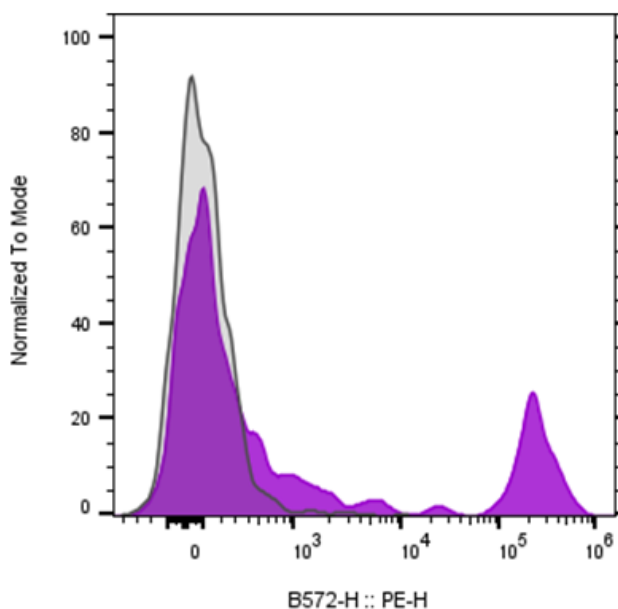
association with other membrane proteins, and organization within lipid rafts rather than classical ligand-receptor binding. This lack of ligand has not limited its therapeutic utility, as CD20 is stably expressed and poorly internalized, properties that are advantageous for antibody-based targeting.

CD20 is implicated in a range of diseases characterized by pathological B cell activity. It is highly expressed on most B cell non-Hodgkin lymphomas and chronic lymphocytic leukemia, making it a valuable diagnostic marker. In autoimmune diseases such as rheumatoid arthritis, multiple sclerosis, and systemic lupus erythematosus, autoreactive CD20<sup>+</sup> B cells contribute to disease progression through autoantibody production and antigen presentation.

Therapeutically, CD20 has revolutionized the treatment of B cell-mediated diseases. Monoclonal antibodies targeting CD20 deplete B cells through mechanisms including antibody-dependent cellular cytotoxicity, complement-dependent cytotoxicity, and induction of apoptosis. CD20-targeted therapies are widely used in hematologic malignancies and autoimmune disorders and have established B cell depletion as a powerful and durable therapeutic strategy.

## PRODUCT DATA

---



Human peripheral blood lymphocytes stained either with purified Anti-Human CD20 clone 2H7 (purple histogram) or an isotype control (gray histogram), followed by PE anti-mouse IgG 2nd antibody.

This product is supplied subject to the terms and conditions at [www.innocyto.com/web/terms.php](http://www.innocyto.com/web/terms.php) and may only be used as provided in the stated terms. Products are for Research Use Only.