

Technical Data Sheet

Biotin Anti-Human CD11b

Catalog Number: 100405, 100406

Size: 25 ug, 100 ug

Target Name: CD11b, Integrin α M chain, C3biR, CR3, Mac-1, Mo1, ITGAM

Regulatory Status: RUO

Product Details

Clone: 011bAB

Application: FC

Reactivity: Human

Format: Biotin

Isotype: Rabbit IgG

Antibody Type: Monoclonal

Formulation: Phosphate-buffered solution, pH 7.2, containing 0.09% sodium azide and 0.2% (w/v) BSA

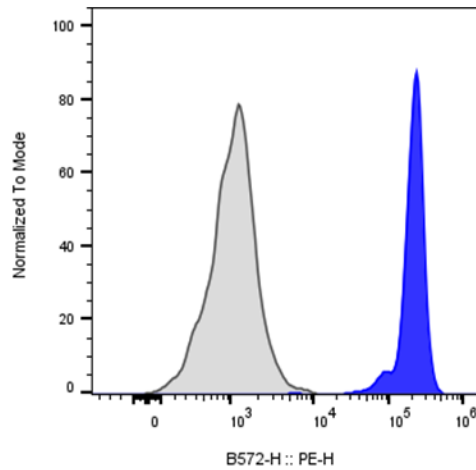
Protein Concentration: 0.2 mg/mL

Storage and Handling: The antibody solution should be stored undiluted between 2°C and 8°C, and protected from prolonged exposure to light. Do not freeze.

Background Information

Integrin Alpha M (ITGAM); the alpha subunit of Mac-1 (Macrophage-1 antigen), the CR3 complement receptor which consists of CD11b and CD18. CR3 is a human cell surface receptor, found on polymorphonuclear leukocytes (mostly neutrophils), NK cells, and mononuclear phagocytes like macrophages, which is capable of recognizing and binding to many molecules found on the surfaces of invading bacteria. Binding to the receptor causes phagocytosis and destruction of the foreign cell.

Product Data



Human granulocytes were stained with either Biotin Anti-Human CD11b clone 011AB (blue histogram) or isotype control (gray histogram), followed by SA-PE.