

Technical Data Sheet

Biotin Anti-Human CD20

Catalog Number: 105611, 105612
Size: 25 ug, 100 ug
Target Name: CD20, MS4A-1, MS4A1
Regulatory Status: RUO

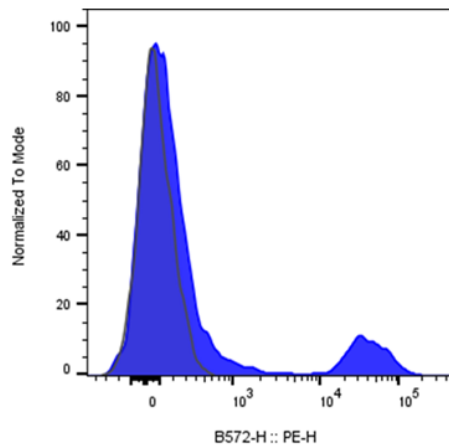
Product Details

Clone: 2H7
Application: FC
Reactivity: Human
Format: Biotin
Isotype: Mouse IgG2b
Antibody Type: Monoclonal
Formulation: Phosphate-buffered solution, pH 7.2, containing 0.09% sodium azide and 0.2% (w/v) BSA
Protein Concentration: 0.2 mg/mL
Storage and Handling: The antibody solution should be stored undiluted between 2°C and 8°C, and protected from prolonged exposure to light. Do not freeze.
Recommended Usage: For flow cytometric staining, it is recommended to use less than 0.1 ug of this reagent per 0.5-1.0 million cells in a 100 µL volume. Optimal reagent performance should be determined by titration for each specific application

Background Information

CD20 is a 33-37 kD, four transmembrane spanning protein, also known as B1 and Bp35. CD20 is expressed on pre-B-cells, resting and activated B cells (not plasma cells), some follicular dendritic cells, and at low levels on a T cell subset. CD20 is heavily phosphorylated on activated B cells and malignant B cells. Homo-oligomeric complexes of CD20 are thought to form Ca²⁺ conductive ion channels in the plasma membrane of B cells. The CD20 molecule is involved in B-cell activation and is associated with various Src family kinases (Lyn, Lck, Fyn). It exists in a complex with MHC class I and II, CD53, CD81, and CD82. The epitope recognized by clone 2H7 has been mapped to the sequence YNCEPANPSEKNSPST, which lies in the large extracellular loop of human CD20.

Product Data



Human peripheral blood lymphocytes stained with Biotin anti-human CD20 clone 2H7 (blue histogram) or an isotype control (gray histogram), followed by SA-PE.