

Technical Data Sheet

Anti-Human CD16

Catalog Number: 105901, 105902

Size: 100 ug, 500 ug

Target Name: CD16, Fc γ RIII

Regulatory Status: RUO

Product Details

Clone: 3G8

Application: FC

Reactivity: Human

Format: Purified

Isotype: Mouse IgG1

Antibody Type: Monoclonal

Formulation: Phosphate-buffered solution, pH 7.2, containing 0.09% sodium azide

Protein Concentration: 0.5 mg/mL

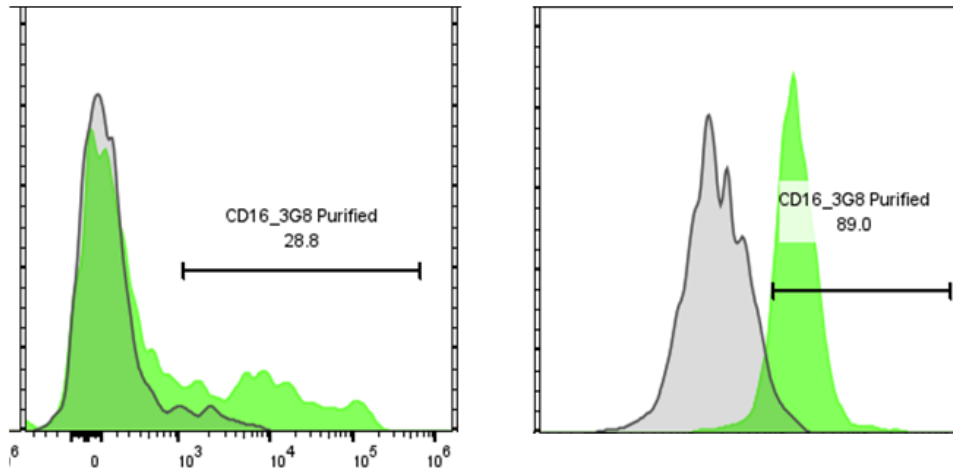
Storage and Handling: The antibody solution should be stored between 2°C and 8°C

Recommended Usage: For flow cytometric staining, it is recommended to use less than 0.5 ug of this reagent per 0.5-1.0 million cells in a 100 μ L volume. Optimal reagent performance should be determined by titration for each specific application

Background Information

CD16 is the type III Fc γ receptor. In humans, it exists in two different forms: Fc γ RIIIa (CD16a) and Fc γ RIIIb (CD16b). CD16, also known as Fc γ RIII, is a cluster of differentiation molecule found on the surface of natural killer cells, neutrophils, monocytes, macrophages, and certain T cells. CD16 has been identified as Fc receptors Fc γ RIIIa (CD16a) and Fc γ RIIIb (CD16b), which participate in signal transduction. It is expressed specifically on neutrophils. CD16 is often used as an additional marker to reliably identify different subsets of human immune cells.

Product Data



Human peripheral blood lymphocytes (left panel) or monocytes (right panel) stained either with purified Anti-Human CD16 clone 3G8 (green histogram) or an isotype control (gray histogram), followed by PE anti-mouse IgG 2nd antibody.