

Technical Data Sheet

PE Anti-Human CD16

Catalog Number: 105907, 105908

Size: 25 tests, 100 tests

Target Name: CD16, Fc γ RIII

Regulatory Status: RUO

Product Details

Clone: 3G8

Application: FC

Reactivity: Human

Format: PE

Isotype: Mouse IgG1

Antibody Type: Monoclonal

Formulation: Phosphate-buffered solution, pH 7.2, containing 0.09% sodium azide and 0.2% (w/v) BSA

Protein Concentration: Supplied at a lot-specific concentration.

Storage and Handling: The antibody solution should be stored undiluted between 2°C and 8°C, and protected from prolonged exposure to light. Do not freeze.

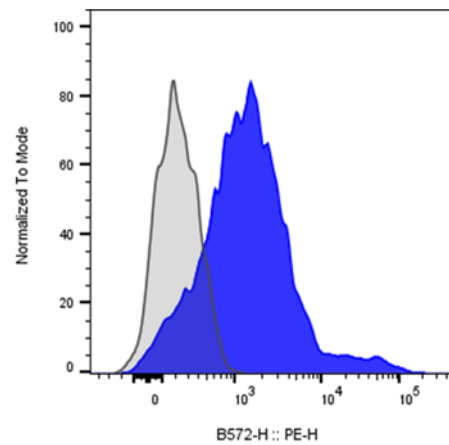
Recommended Usage: For flow cytometric staining, it is recommended to use 5 μ L of this reagent per 0.5-1.0 million cells in a 100 μ L volume. Optimal reagent performance should be determined by titration for each specific application.

Excitation Laser: Blue Laser (488 nm) Green/Yellow laser (532/561nm)

Background Information

CD16 is the type III Fc γ receptor. In humans, it exists in two different forms: Fc γ RIIIa (CD16a) and Fc γ RIIIb (CD16b). CD16, also known as Fc γ RIII, is a cluster of differentiation molecule found on the surface of natural killer cells, neutrophils, monocytes, macrophages, and certain T cells. CD16 has been identified as Fc receptors Fc γ RIIIa (CD16a) and Fc γ RIIIb (CD16b), which participate in signal transduction. It is expressed specifically on neutrophils. CD16 is often used as an additional marker to reliably identify different subsets of human immune cells.

Product Data



Human peripheral blood monocytes stained with either PE anti-human CD16 clone 3G8 (blue histogram) or an isotype control (gray histogram).