

Technical Data Sheet

Anti-Human CD15

Catalog Number: 100701, 100702

Size: 100 ug, 500 ug

Target Name: CD15, Lewis X, 3-FAL, 3-FL, LNFP III, Lex , SSEA-1, X-hapten

Regulatory Status: RUO

Product Details

Clone: W6D3

Application: FC

Reactivity: Human

Format: Purified

Isotype: Mouse IgG1

Antibody Type: Monoclonal

Formulation: Phosphate-buffered solution, pH 7.2, containing 0.09% sodium azide

Protein Concentration: 0.5 mg/mL

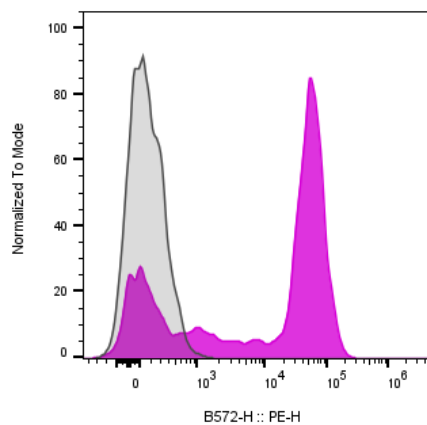
Storage and Handling: The antibody solution should be stored between 2°C and 8°C

Recommended Usage: For flow cytometric staining, it is recommended to use less than 0.1 ug of this reagent per 0.5-1.0 million cells in a 100 µL volume. Optimal reagent performance should be determined by titration for each specific application

Background Information

CD15, a carbohydrate adhesion molecule (not a protein) that mediates phagocytosis and chemotaxis, found on neutrophils; expressed in patients with Hodgkin disease, some B-cell chronic lymphocytic leukemias, acute lymphoblastic leukemias, and most acute nonlymphocytic leukemias. It is also called Lewis x and SSEA-1 (stage specific embryonic antigen 1) and represents a marker for murine pluripotent stem cells, in which it plays an important role in adhesion and migration of the cells in the preimplantation embryo.

Product Data



Human granulocytes were stained either with purified Anti-Human CD15 clone W6D3 (color-filled histogram) or an isotype control (gray histogram), followed by PE anti-mouse IgG.