

## Technical Data Sheet

### Biotin Anti-Human CD15

**Catalog Number:** 100703, 100704

**Size:** 25 ug, 100 ug

**Target Name:** CD15, Lewis X, 3-FAL, 3-FL, LNFP III, Lex , SSEA-1, X-hapten

**Regulatory Status:** RUO

#### Product Details

---

**Clone:** W6D3

**Application:** FC

**Reactivity:** Human

**Format:** Biotin

**Isotype:** Mouse IgG1

**Antibody Type:** Monoclonal

**Formulation:** Phosphate-buffered solution, pH 7.2, containing 0.09% sodium azide and 0.2% (w/v) BSA

**Protein Concentration:** 0.2 mg/mL

**Storage and Handling:** The antibody solution should be stored undiluted between 2°C and 8°C, and protected from prolonged exposure to light. Do not freeze.

**Recommended Usage:** For flow cytometric staining, it is recommended to use less than 0.1 ug of this reagent per 0.5-1.0 million cells in a 100 µL volume. Optimal reagent performance should be determined by titration for each specific application

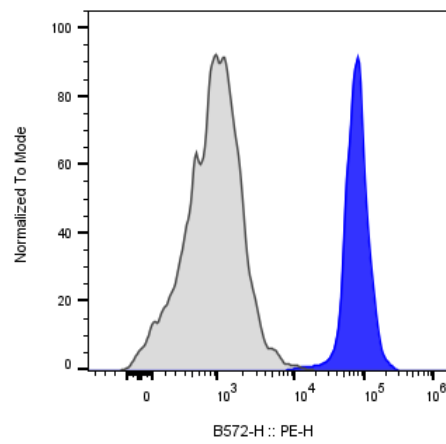
#### Background Information

---

CD15, a carbohydrate adhesion molecule (not a protein) that mediates phagocytosis and chemotaxis, found on neutrophils; expressed in patients with Hodgkin disease, some B-cell chronic lymphocytic leukemias, acute lymphoblastic leukemias, and most acute nonlymphocytic leukemias. It is also called Lewis x and SSEA-1 (stage specific embryonic antigen 1) and represents a marker for murine pluripotent stem cells, in which it plays an important role in adhesion and migration of the cells in the preimplantation embryo.

#### Product Data

---



Human granulocytes were stained with either Biotin Anti-Human CD15 clone W6D3 (blue histogram) or isotype control (gray histogram), followed by SA-PE.