

Technical Data Sheet

PE Anti-Human CD14

Catalog Number: 106105, 106106

Size: 25 tests, 100 tests

Target Name: CD14, LPS receptor

Regulatory Status: RUO

Product Details

Clone: 63D3

Application: FC

Reactivity: Human

Format: PE

Isotype: Mouse IgG1

Antibody Type: Monoclonal

Formulation: Phosphate-buffered solution, pH 7.2, containing 0.09% sodium azide and 0.2% (w/v) BSA

Protein Concentration: Supplied at a lot-specific concentration.

Storage and Handling: The antibody solution should be stored undiluted between 2°C and 8°C, and protected from prolonged exposure to light. Do not freeze.

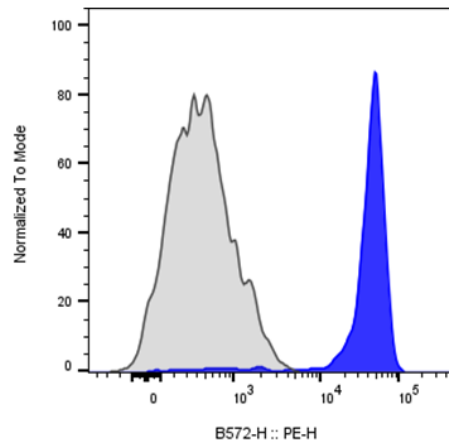
Recommended Usage: For flow cytometric staining, it is recommended to use 5 µL of this reagent per 0.5-1.0 million cells in a 100 µL volume. Optimal reagent performance should be determined by titration for each specific application.

Excitation Laser: Blue Laser (488 nm) Green/Yellow laser (532/561nm)

Background Information

CD14 (cluster of differentiation 14) is a human protein made mostly by macrophages as part of the innate immune system. CD14 is a 53-55 kD glycosylphosphatidylinositol (GPI)-linked membrane glycoprotein that is also known as the LPS receptor. CD14 is expressed at high levels on monocytes and macrophages, and at lower levels on granulocytes. Some dendritic cell populations such as interfollicular dendritic cells, reticular dendritic cells, and Langerhans cells have also been reported to express CD14. As a high-affinity receptor for LPS, CD14 is involved in the clearance of gram-negative pathogens and in the upregulation of adhesion molecules and cytokine expression in monocytes and neutrophils.

Product Data



Human peripheral blood monocytes stained either with PE Anti-Human CD14 clone 63D3 (blue histogram) or an isotype control (gray histogram).