

## Technical Data Sheet

### Anti-Human CD28

**Catalog Number:** 106201, 106202

**Size:** 100 ug, 500 ug

**Target Name:** T44, Tp44

**Regulatory Status:** RUO

#### Product Details

---

**Clone:** CD28.2

**Application:** FC

**Reactivity:** Human

**Format:** Purified

**Isotype:** Mouse IgG1

**Antibody Type:** Monoclonal

**Formulation:** Phosphate-buffered solution, pH 7.2, containing 0.09% sodium azide

**Protein Concentration:** 0.5 mg/mL

**Storage and Handling:** The antibody solution should be stored between 2°C and 8°C

**Recommended Usage:** For flow cytometric staining, it is recommended to use less than 0.25 ug of this reagent per 0.5-1.0 million cells in a 100 µL volume. Optimal reagent performance should be determined by titration for each specific application

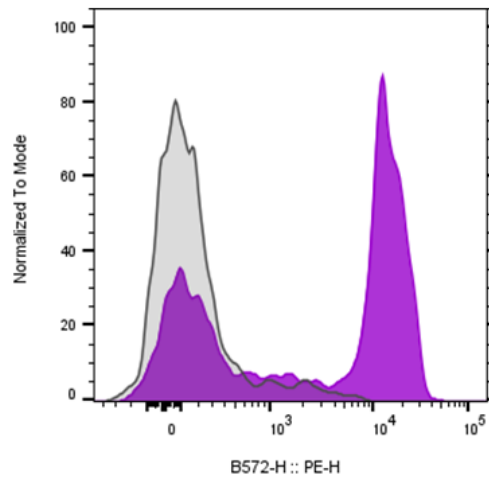
#### Background Information

---

CD28 (Cluster of Differentiation 28) is a protein expressed on T cells that provides essential co-stimulatory signals required for T cell activation and survival. CD28 is a 44 kD disulfide-linked homodimeric type I glycoprotein. It is a member of the immunoglobulin superfamily and is also known as T44 or Tp44. CD28 is expressed on most T lineage cells, NK cell subsets, and plasma cells. CD28 binds both CD80 and CD86 using a highly conserved motif MYPPY in the CDR3-like loop. CD28 is considered a major costimulatory molecule, inducing T lymphocyte activation and IL-2 synthesis, and preventing cell death.

#### Product Data

---



Human peripheral blood lymphocytes stained either with purified Anti-Human CD28 clone CD28.2 (purple histogram) or an isotype control (gray histogram), followed by PE anti-mouse IgG 2nd antibody.