

PE Anti-Human TCR Vb13.1 Antibody

Catalog Number:	106309, 106310
Size:	25 tests, 100 tests
Target Name:	TCR Vb13.1, T cell receptor V β 13.1 chain, TCRBV13.1, TCRBV13
Regulatory Status:	RUO

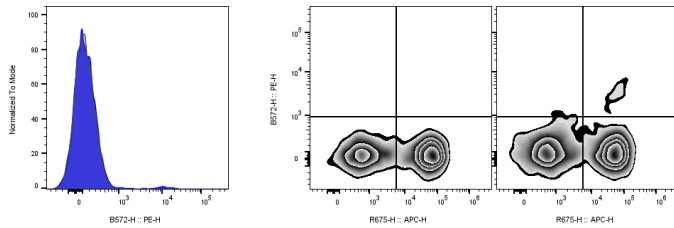
PRODUCT DETAILS

Clone:	H131
Application:	Flow Cytometry
Reactivity:	Human
Format:	PE
Isotype:	Mouse IgG2b
Antibody Type:	Monoclonal
Formulation:	Phosphate-buffered solution, pH 7.2, containing 0.09% sodium azide and 0.2% (w/v) BSA
Protein Concentration:	Supplied at a lot-specific concentration.
Storage and Handling:	The antibody solution should be stored undiluted between 2°C and 8°C, and protected from prolonged exposure to light. Do not freeze.
Recommended Usage:	For flow cytometric staining, it is recommended to use 5 μ L of this reagent per 0.5-1.0 million cells in a 100 μ L volume. Optimal reagent performance should be determined by titration for each specific application. PE has an excitation max at 565 nm and an emission max at 575 nm.
Excitation Laser:	Blue Laser (488 nm) Green/Yellow laser (532/561nm)
Isotype Control:	301615
RRID:	AB_3738717

BACKGROUND INFORMATION

TCR V β 13.1 is a variant of the TCR β chain. The receptor is complexed with the TCR α chain and belongs to the immunoglobulin superfamily. It is expressed on a subset of T cells and some T cell clones. Variability in the β chain is generated by V β , D β , and J β gene rearrangement, while variability in the α chain is generated by V α and J α rearrangement. TCR V β 13.1 has been shown to be related to antigen recognition and inflammation as well as diseases, such as HIV and multiple sclerosis.

PRODUCT DATA



Human peripheral blood lymphocytes stained with CD3 iF647 (APC) and PE Anti-Human TCR Vb13.1 clone H131 (blue histogram, right panel) or an isotype control (gray histogram, middle panel).

This product is supplied subject to the terms and conditions at www.innocyto.com/web/terms.php and may only be used as provided in the stated terms. Products are for Research Use Only.