

## Technical Data Sheet

### iF647 Anti-Human CD63

**Catalog Number:** 106403, 106404

**Size:** 25 tests, 100 tests

**Target Name:** CD63, LIMP, LAMP-3, Melanoma-associated antigen (ME491), Pltgp40, gp55

**Regulatory Status:** RUO

#### Product Details

---

**Clone:** H5C6

**Application:** FC

**Reactivity:** Human

**Format:** iF647

**Isotype:** Mouse IgG1

**Antibody Type:** Monoclonal

**Formulation:** Phosphate-buffered solution, pH 7.2, containing 0.09% sodium azide and 0.2% (w/v) BSA

**Protein Concentration:** Supplied at a lot-specific concentration.

**Storage and Handling:** The antibody solution should be stored undiluted between 2°C and 8°C, and protected from prolonged exposure to light. Do not freeze.

**Recommended Usage:** For flow cytometric staining, it is recommended to use 5 µL of this reagent per 0.5-1.0 million cells in a 100 µL volume. Optimal reagent performance should be determined by titration for each specific application.

**Excitation Laser:** Red Laser (633 nm)

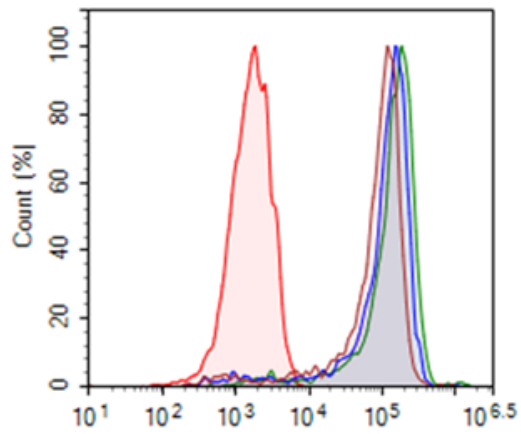
#### Background Information

---

CD63 antigen is a protein that, in humans, is encoded by the CD63 gene. The protein encoded by this gene is a member of the transmembrane 4 superfamily, also known as the tetraspanin family. The proteins mediate signal transduction events that play a role in the regulation of cell development, activation, growth, and motility. This encoded protein is a cell surface glycoprotein that is known to complex with integrins.

#### Product Data

---



Human peripheral blood lymphocytes stained with iF647 anti-human CD63 clone H5C7