

Technical Data Sheet

PE Anti-Human CD63

Catalog Number: 106407, 106408

Size: 25 tests, 100 tests

Target Name: CD63, LIMP, LAMP-3, Melanoma-associated antigen (ME491), Pltgp40, gp55

Regulatory Status: RUO

Product Details

Clone: H5C6

Application: FC

Reactivity: Human

Format: PE

Isotype: Mouse IgG1

Antibody Type: Monoclonal

Formulation: Phosphate-buffered solution, pH 7.2, containing 0.09% sodium azide and 0.2% (w/v) BSA

Protein Concentration: Supplied at a lot-specific concentration.

Storage and Handling: The antibody solution should be stored undiluted between 2°C and 8°C, and protected from prolonged exposure to light. Do not freeze.

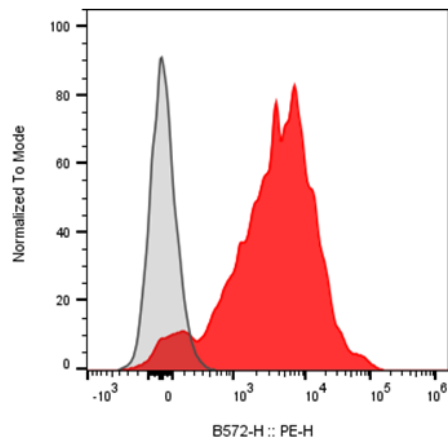
Recommended Usage: For flow cytometric staining, it is recommended to use 5 µL of this reagent per 0.5-1.0 million cells in a 100 µL volume. Optimal reagent performance should be determined by titration for each specific application.

Excitation Laser: Blue Laser (488 nm) Green/Yellow laser (532/561nm)

Background Information

CD63 antigen is a protein that, in humans, is encoded by the CD63 gene. The protein encoded by this gene is a member of the transmembrane 4 superfamily, also known as the tetraspanin family. The proteins mediate signal transduction events that play a role in the regulation of cell development, activation, growth, and motility. This encoded protein is a cell surface glycoprotein that is known to complex with integrins.

Product Data



Human peripheral blood lymphocytes stained with either PE Anti-Human CD63 clone H5C6 (red histogram) or an isotype control (gray histogram).