

## Technical Data Sheet

### Anti-Human CD45

**Catalog Number:** 106501, 106502

**Size:** 100 ug, 500 ug

**Target Name:** CD45, LCA, T200

**Regulatory Status:** RUO

#### Product Details

---

**Clone:** HI30

**Application:** FC

**Reactivity:** Human

**Format:** Purified

**Isotype:** Mouse IgG1

**Antibody Type:** Monoclonal

**Formulation:** Phosphate-buffered solution, pH 7.2, containing 0.09% sodium azide

**Protein Concentration:** 0.5 mg/mL

**Storage and Handling:** The antibody solution should be stored between 2°C and 8°C

**Recommended Usage:** For flow cytometric staining, it is recommended to use less than 0.25 ug of this reagent per 0.5-1.0 million cells in a 100 µL volume. Optimal reagent performance should be determined by titration for each specific application

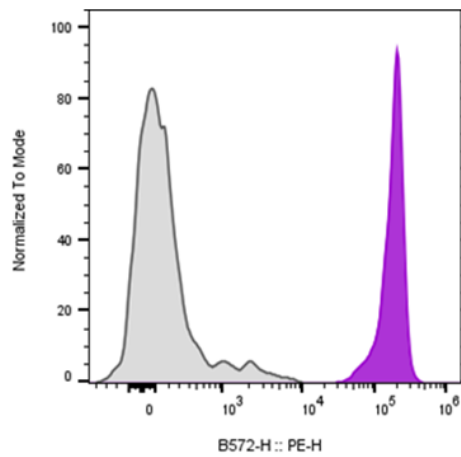
#### Background Information

---

The CD45 antigen (CD stands for cluster of differentiation) is a protein which was originally called leukocyte common antigen. The protein encoded by this gene is a member of the protein tyrosine phosphatase (PTP) family. CD45 is a 180-240 kD single chain type I membrane glycoprotein also known as leukocyte common antigen (LCA) and T200. It is a tyrosine phosphatase expressed on the plasma membrane of all hematopoietic cells, except erythrocytes and platelets. CD45 is a signaling molecule that regulates a variety of cellular processes including cell growth, differentiation, cell cycle, and oncogenic transformation.

#### Product Data

---



Human peripheral blood lymphocytes stained either with purified Anti-Human CD45 clone HI30 (purple histogram) or an isotype control (gray histogram), followed by PE anti-mouse IgG 2nd antibody.