

Technical Data Sheet

Anti-Human CD45

Catalog Number: 106501, 106502

Size: 100 ug, 500 ug

Target Name: CD45, LCA, T200

Regulatory Status: RUO

Product Details

Clone: HI30

Application: FC

Reactivity: Human

Format: Purified

Isotype: Mouse IgG1

Antibody Type: Monoclonal

Formulation: Phosphate-buffered solution, pH 7.2, containing 0.09% sodium azide

Protein Concentration: 0.5 mg/mL

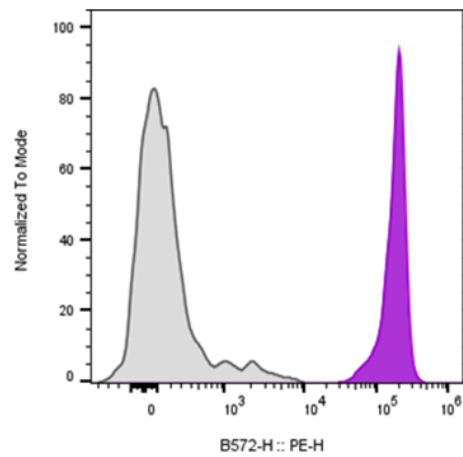
Storage and Handling: The antibody solution should be stored between 2°C and 8°C

Recommended Usage: For flow cytometric staining, it is recommended to use less than 0.25 ug of this reagent per 0.5-1.0 million cells in a 100 µL volume. Optimal reagent performance should be determined by titration for each specific application

Background Information

The CD45 antigen (CD stands for cluster of differentiation) is a protein which was originally called leukocyte common antigen. The protein encoded by this gene is a member of the protein tyrosine phosphatase (PTP) family. CD45 is a 180-240 kD single chain type I membrane glycoprotein also known as leukocyte common antigen (LCA) and T200. It is a tyrosine phosphatase expressed on the plasma membrane of all hematopoietic cells, except erythrocytes and platelets. CD45 is a signaling molecule that regulates a variety of cellular processes including cell growth, differentiation, cell cycle, and oncogenic transformation.

Product Data



Human peripheral blood lymphocytes stained either with purified Anti-Human CD45 clone HI30 (purple histogram) or an isotype control (gray histogram), followed by PE anti-mouse IgG 2nd antibody.