

Technical Data Sheet

Anti-Mouse CD62L

Catalog Number: 200501, 200502

Size: 100 ug, 500 ug

Target Name: CD62L, LAM-1, L-selectin, Ly-22

Regulatory Status: RUO

Product Details

Clone: MEL-14

Application: FC

Reactivity: Mouse

Format: Purified

Isotype: Rat IgG2a

Antibody Type: Monoclonal

Formulation: Phosphate-buffered solution, pH 7.2, containing 0.09% sodium azide

Protein Concentration: 0.5 mg/mL

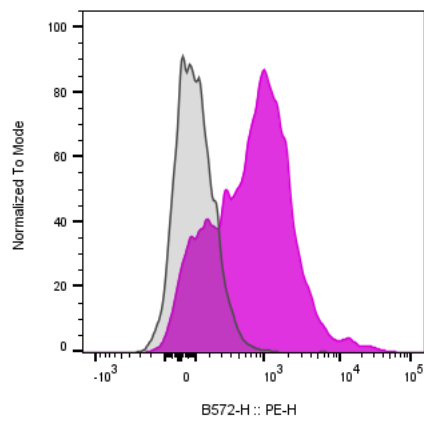
Storage&Handling: The antibody solution should be stored between 2°C and 8°C

Recommended Usage: For flow cytometric staining, it is recommended to use less than 0.5 ug of this reagent per 0.5-1.0 million cells in a 100 µL volume. Optimal reagent performance should be determined by titration for each specific application.

Background Information

CD62L is a ~74–95 kDa (commonly ~75 kDa) single-chain type I transmembrane glycoprotein encoded by the SELL gene. It belongs to the selectin family of membrane-anchored, calcium-dependent C-type lectins (alongside CD62E and CD62P) that bind to specific carbohydrate ligands. Like other selectins, CD62L recognizes sialylated carbohydrate structures, including the Sialyl Lewis X (sLeX/CD15s) determinant, via its C-type lectin domain. High-affinity ligands include certain glycoforms of CD34, GlyCAM-1, and MAdCAM-1, while binding to sLeX-related oligosaccharides occurs with lower affinity.

Product Data



Mouse splenocytes stained with either purified Anti-mouse CD62L clone MEL-14 (purple histogram) or an isotype control (gray histogram), followed by PE anti-mouse IgG.