

Technical Data Sheet

Anti-Mouse Ly-6A/E (Sca-1)

Catalog Number: 200601, 200602

Size: 100 ug, 500 ug

Target Name: Ly-6A/E, Sca-1

Regulatory Status: RUO

Product Details

Clone: D7

Application: FC

Reactivity: Mouse

Format: Purified

Isotype: Rat IgG2a

Antibody Type: Monoclonal

Formulation: Phosphate-buffered solution, pH 7.2, containing 0.09% sodium azide

Protein Concentration: 0.5 mg/mL

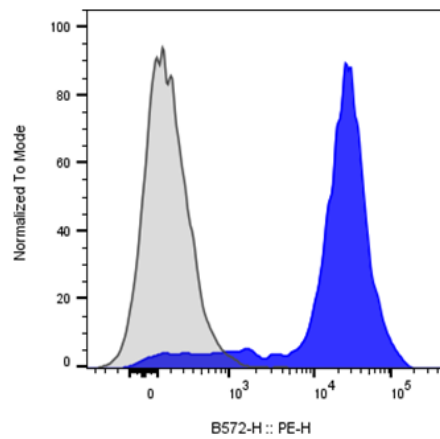
Storage&Handling: The antibody solution should be stored between 2°C and 8°C

Recommended Usage: For flow cytometric staining, it is recommended to use less than 0.2 ug of this reagent per 0.5-1.0 million cells in a 100 µL volume. Optimal reagent performance should be determined by titration for each specific application.

Background Information

Stem Cell Antigen-1 (Sca-1), also known as Ly-6A/E, is an 18 kDa GPI-anchored glycoprotein and a member of the Ly-6 multigene family. It is widely used as a marker for murine hematopoietic stem cells and various progenitor cell populations

Product Data



Mouse splenocytes stained with either Anti-Mouse Ly-6A/E (Sca-1) clone D7 (blue histogram) or an isotype control (gray histogram), followed by PE conjugated anti-rat IgG.