

## Technical Data Sheet

### iF647 Anti-Mouse Ly-6A/E (Sca-1)

**Catalog Number:** 200603, 200604

**Size:** 25 tests, 100 tests

**Target Name:** Ly-6A/E, Sca-1

**Regulatory Status:** RUO

#### Product Details

---

**Clone:** D7

**Application:** FC

**Reactivity:** Mouse

**Format:** iF647

**Isotype:** Rat IgG2a

**Antibody Type:** Monoclonal

**Formulation:** Phosphate-buffered solution, pH 7.2, containing 0.09% sodium azide and 0.2% (w/v) BSA

**Protein Concentration:** Supplied at a lot-specific concentration.

**Storage&Handling:** The antibody solution should be stored undiluted between 2°C and 8°C, and protected from prolonged exposure to light. Do not freeze.

**Recommended Usage:** For flow cytometric staining, it is recommended to use 5 µL of this reagent per 0.5-1.0 million cells in a 100 µL volume. Optimal reagent performance should be determined by titration for each specific application.

**Excitation Laser:** Red Laser (633 nm)

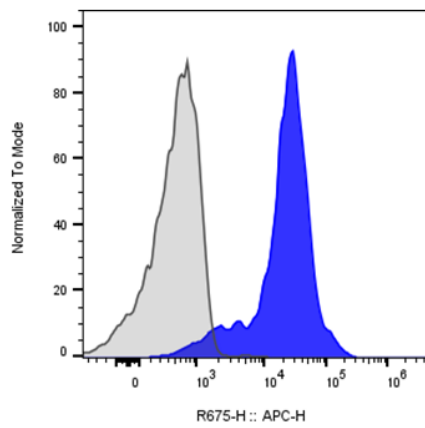
#### Background Information

---

Stem Cell Antigen-1 (Sca-1), also known as Ly-6A/E, is an 18 kDa GPI-anchored glycoprotein and a member of the Ly-6 multigene family. It is widely used as a marker for murine hematopoietic stem cells and various progenitor cell populations

#### Product Data

---



Mouse splenocytes stained with either iF647 Anti-Mouse Ly-6A/E (Sca-1) clone D7 (blue histogram) or an isotype control (gray histogram).