

## Anti-Mouse Ly-6G (Gr-1) Antibody

|                           |  |
|---------------------------|--|
| <b>Catalog Number:</b>    | 200701, 200702                                     |
| <b>Size:</b>              | 100 ug, 500 ug                                     |
| <b>Target Name:</b>       | Ly-6G, Lymphocyte antigen 6 complex, locus G, Gr-1 |
| <b>Regulatory Status:</b> | RUO  |

### PRODUCT DETAILS

---

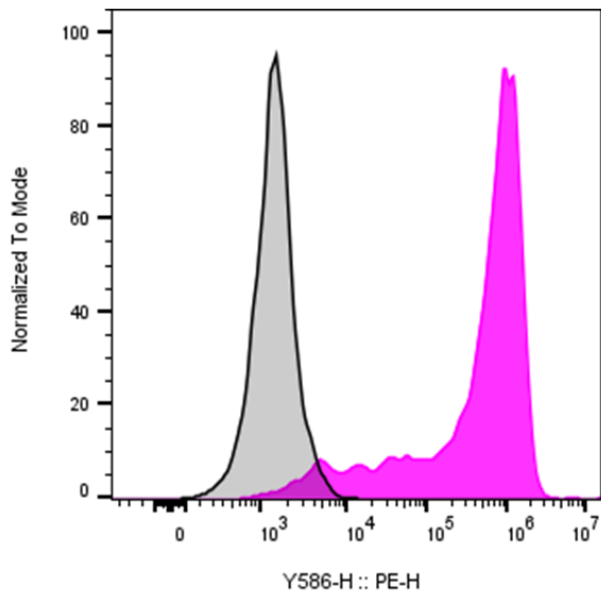
|                               |  |
|-------------------------------|--|
| <b>Clone:</b>                 | 1A8  |
| <b>Application:</b>           | Flow Cytometry   |
| <b>Reactivity:</b>            | Mouse  |
| <b>Format:</b>                | Purified   |
| <b>Isotype:</b>               | Rat IgG2a  |
| <b>Antibody Type:</b>         | Monoclonal   |
| <b>Formulation:</b>           | Phosphate-buffered solution, pH 7.2, containing 0.09% sodium azide   |
| <b>Protein Concentration:</b> | 0.5 mg/mL  |
| <b>Storage&amp;Handling:</b>  | The antibody solution should be stored between 2°C and 8°C   |
| <b>Recommended Usage:</b>     | For flow cytometric staining, it is recommended to use less than 0.2 ug of this reagent per 0.5-1.0 million cells in a 100 µL volume. Optimal reagent performance should be determined by titration for each specific application. |
| <b>Isotype Control:</b>       | 300201   |
| <b>RRID:</b>                  | AB_3738998   |

### BACKGROUND INFORMATION

---

Lymphocyte antigen 6 complex, locus G (Ly-6G), also known as Gr-1, is a 21–25 kDa glycosylphosphatidylinositol (GPI)-anchored surface protein. In mice, it is expressed predominantly on peripheral granulocytes, especially neutrophils, and on the majority of myeloid cells in the bone marrow. Ly-6G is transiently detected on developing monocytes but is stably and highly expressed on mature neutrophils. It plays important roles in neutrophil infiltration, recruitment, and migration, and associates with  $\beta$ 2 integrins CD11a and CD11b to regulate their expression and function. The natural ligand for Ly-6G remains unknown, and it is widely used as a specific marker for murine neutrophils in immunological studies.

## PRODUCT DATA



Mouse bone marrow cells were stained with purified anti-mouse Ly-6G clone 1A8 (color-filled histogram) or an isotype control (gray histogram), followed by PE anti-Rat IgG.

This product is supplied subject to the terms and conditions at [www.innocyto.com/web/terms.php](http://www.innocyto.com/web/terms.php) and may only be used as provided in the stated terms. Products are for Research Use Only.