

Technical Data Sheet

Biotin Anti-Mouse Ly-6G

Catalog Number: 200703, 200704

Size: 25 ug, 100 ug

Target Name: Ly-6G, Lymphocyte antigen 6 complex, locus G, Gr-1

Regulatory Status: RUO

Product Details

Clone: 1A8

Application: FC

Reactivity: Mouse

Format: Biotin

Isotype: Rat IgG2a

Antibody Type: Monoclonal

Formulation: Phosphate-buffered solution, pH 7.2, containing 0.09% sodium azide and 0.2% (w/v) BSA

Protein Concentration: 0.2 mg/mL

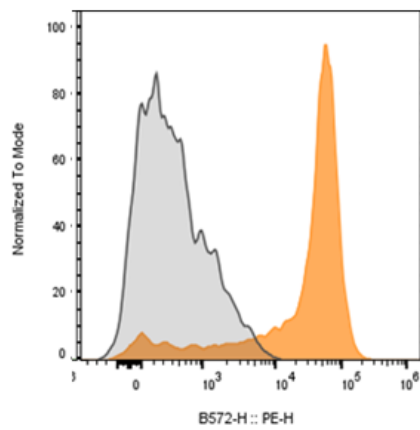
Storage&Handling: The antibody solution should be stored between 2°C and 8°C

Recommended Usage: For flow cytometric staining, it is recommended to use less than 0.1 ug of this reagent per 0.5-1.0 million cells in a 100 µL volume. Optimal reagent performance should be determined by titration for each specific application.

Background Information

Lymphocyte antigen 6 complex, locus G (Ly-6G), also known as Gr-1, is a 21–25 kDa glycosylphosphatidylinositol (GPI)-anchored surface protein. In mice, it is expressed predominantly on peripheral granulocytes, especially neutrophils, and on the majority of myeloid cells in the bone marrow. Ly-6G is transiently detected on developing monocytes but is stably and highly expressed on mature neutrophils. It plays important roles in neutrophil infiltration, recruitment, and migration, and associates with $\alpha 2$ integrins CD11a and CD11b to regulate their expression and function. The natural ligand for Ly-6G remains unknown, and it is widely used as a specific marker for murine neutrophils in immunological studies.

Product Data



Mouse bone marrow cells stained with either Biotin Anti-Mouse Ly-6G clone 1A8 (Orange histogram) or an isotype control (gray histogram), followed by SA-PE.