

Technical Data Sheet

PE Anti-Mouse Ly-6G

Catalog Number: 200709, 200710

Size: 25 tests, 100 tests

Target Name: Ly-6G, Lymphocyte antigen 6 complex, locus G, Gr-1

Regulatory Status: RUO

Product Details

Clone: 1A8

Application: FC

Reactivity: Mouse

Format: PE

Isotype: Rat IgG2a

Antibody Type: Monoclonal

Formulation: Phosphate-buffered solution, pH 7.2, containing 0.09% sodium azide and 0.2% (w/v) BSA

Protein Concentration: Supplied at a lot-specific concentration.

Storage&Handling: The antibody solution should be stored undiluted between 2°C and 8°C, and protected from prolonged exposure to light. Do not freeze.

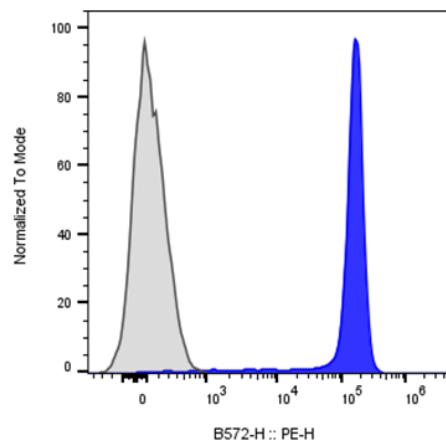
Recommended Usage: For flow cytometric staining, it is recommended to use 5 µL of this reagent per 0.5-1.0 million cells in a 100 µL volume. Optimal reagent performance should be determined by titration for each specific application.

Excitation Laser: Blue Laser (488 nm) Green/Yellow laser (532/561nm)

Background Information

Lymphocyte antigen 6 complex, locus G (Ly-6G), also known as Gr-1, is a 21–25 kDa glycosylphosphatidylinositol (GPI)-anchored surface protein. In mice, it is expressed predominantly on peripheral granulocytes, especially neutrophils, and on the majority of myeloid cells in the bone marrow. Ly-6G is transiently detected on developing monocytes but is stably and highly expressed on mature neutrophils. It plays important roles in neutrophil infiltration, recruitment, and migration, and associates with $\alpha 2$ integrins CD11a and CD11b to regulate their expression and function. The natural ligand for Ly-6G remains unknown, and it is widely used as a specific marker for murine neutrophils in immunological studies.

Product Data



Mouse bone marrow cells stained with either PE Anti-Mouse Ly-6G clone 1A8 (blue histogram) or an isotype control (gray histogram).