

Technical Data Sheet

iF488 Anti-Mouse CCR8 (CD198)

Catalog Number: 200803

Size: 25 tests

Target Name: CD198, CCR8 CC-CKR-8, Ter1

Regulatory Status: RUO

Product Details

Clone: m198AR2b

Application: FC

Reactivity: Mouse

Format: iF488

Isotype: Rat IgG2b

Antibody Type: Monoclonal

Formulation: Phosphate-buffered solution, pH 7.2, containing 0.09% sodium azide and 0.2% (w/v) BSA

Protein Concentration: Supplied at a lot-specific concentration.

Storage&Handling: The antibody solution should be stored undiluted between 2°C and 8°C, and protected from prolonged exposure to light. Do not freeze.

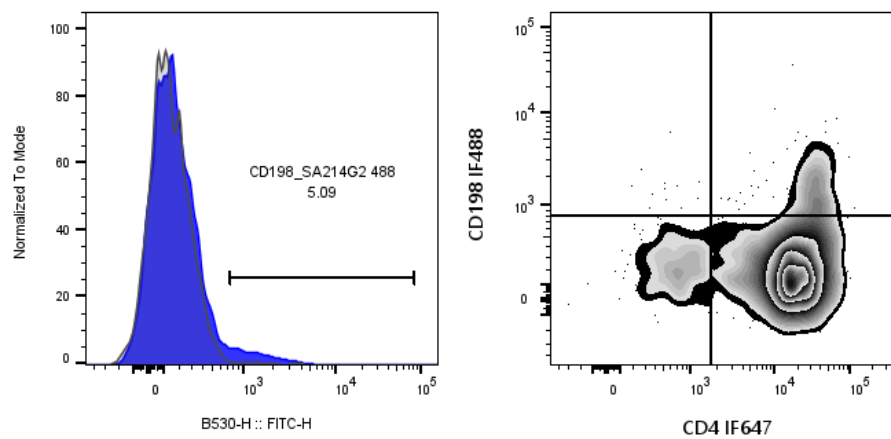
Recommended Usage: For flow cytometric staining, it is recommended to use 5 uL of this reagent per 0.5-1.0 million cells in a 100 µL volume. Optimal reagent performance should be determined by titration for each specific application.

Excitation Laser: Blue Laser (488 nm)

Background Information

CCR8 is a 41 kDa seven-transmembrane GPCR in the γ -chemokine receptor family, expressed on thymocytes, Tregs, NKT, Th2 cells, NK cells, monocytes, macrophages, and some dendritic cells, with highest levels in the thymus and tumor-infiltrating Tregs. It binds CCL1 (I-309), CCL17 (TARC), and CCL4 (MIP-1?) to mediate chemotaxis, thymocyte apoptosis, and positioning of activated T cells in immune sites. CCR8's selective enrichment on tumor Tregs makes it a potential target for cancer immunotherapy.

Product Data



Mouse thymocytes stained with iF488 Anti-Mouse CCR8 (CD198) clone m198AR2b (blue histogram) or an isotype control (gray histogram). Zebra plot shows iF488 Anti-Mouse CCR8 (CD198) clone m198AR2b , co-stained with CD4 IF647.