

Technical Data Sheet

Anti-Mouse TCR α chain

Catalog Number: 201701, 201702

Size: 100 μ g, 500 μ g

Target Name: TCR α chain, TCR-?

Regulatory Status: RUO

Product Details

Clone: H57-597-R1

Application: FC

Reactivity: Mouse

Format: Purified

Isotype: Rat IgG1

Antibody Type: Monoclonal

Formulation: Phosphate-buffered solution, pH 7.2, containing 0.09% sodium azide

Protein Concentration: 0.5 mg/mL

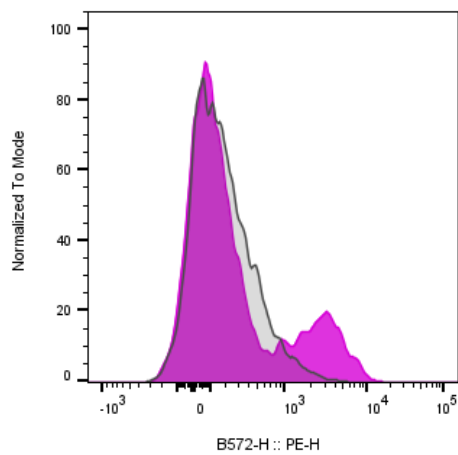
Storage&Handling: Store the antibody undiluted at 2°C to 8°C.

Recommended Usage: For flow cytometric staining, it is recommended to use less than 0.2 μ g of this reagent per 0.5-1.0 million cells in a 100 μ L volume. Optimal reagent performance should be determined by titration for each specific application.

Background Information

The T cell receptor (TCR) is a heterodimeric molecule expressed on the surface of T lymphocytes, responsible for recognizing antigens presented by MHC molecules. In ~95% of T cells, the TCR consists of an α (alpha) and β (beta) chain ($\alpha\beta$ TCR), while in ~5% of T cells, it is composed of γ (gamma) and δ (delta) chains ($\gamma\delta$ TCR). TCR α is a member of the immunoglobulin superfamily and a component of the CD3/TCR complex, which includes CD3 subunits essential for signal transduction. This complex mediates antigen recognition, signal transduction, and subsequent T cell activation.

Product Data



Mouse splenocytes stained with either Anti-Mouse TCR γ chain clone H57-597-R1 (color-filled histogram) or an isotype control (gray histogram), followed by PE conjugated anti-Rat IgG.