

Technical Data Sheet

PE Anti-Mouse CD16/32

Catalog Number: 201805, 201806

Size: 25 tests, 100 tests

Target Name: CD16/32

Regulatory Status: RUO

Product Details

Clone: 2.4G2

Application: FC

Reactivity: Mouse

Format: PE

Isotype: Mouse IgG2b

Antibody Type: Monoclonal

Formulation: Phosphate-buffered solution, pH 7.2, containing 0.09% sodium azide and 0.2% (w/v) BSA

Protein Concentration: Supplied at a lot-specific concentration.

Storage&Handling: The antibody solution should be stored undiluted between 2°C and 8°C, and protected from prolonged exposure to light. Do not freeze.

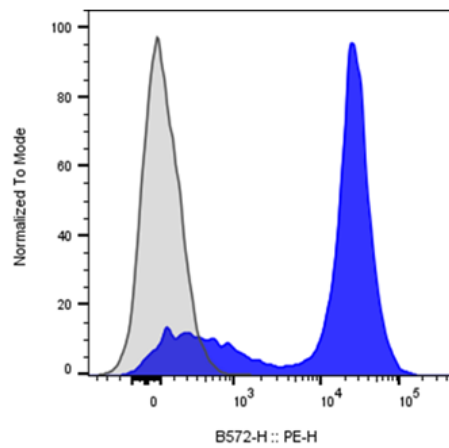
Recommended Usage: For flow cytometric staining, it is recommended to use 5 µL of this reagent per 0.5-1.0 million cells in a 100 µL volume. Optimal reagent performance should be determined by titration for each specific application.

Excitation Laser: Blue Laser (488 nm) Green/Yellow laser (532/561nm)

Background Information

CD16/32 are Fc-gamma receptors (FcγRs) expressed on a variety of immune cells, including B cells, monocytes/macrophages, NK cells, granulocytes, mast cells, and dendritic cells. CD16 corresponds to the low-affinity Fc receptor III (FcγRIII), while CD32 corresponds to Fc receptor II (FcγRII). These receptors bind antibody-antigen immune complexes, linking innate and adaptive immunity and mediating adaptive immune responses. In research, antibodies against CD16/CD32 are commonly used to block Fc receptor-mediated interactions, preventing non-specific binding of antibodies or immunoglobulin complexes to immune cells during experiments such as flow cytometry and immunohistochemistry, thereby improving experimental accuracy.

Product Data



Mouse splenocytes stained with either PE Anti-Mouse CD16/32 clone 2.4G2 (blue histogram) or an isotype control (gray histogram).