

Technical Data Sheet

iF647 Anti-Human CD19

Catalog Number: 108505, 108506

Size: 25 tests, 100 tests

Target Name: CD19, B4, CVID3, MGC12802

Regulatory Status: RUO

Product Details

Clone: 019BB

Application: FC

Reactivity: Human

Format: iF647

Isotype: Rabbit IgG

Antibody Type: Monoclonal

Formulation: Phosphate-buffered solution, pH 7.2, containing 0.09% sodium azide and 0.2% (w/v) BSA

Protein Concentration: Supplied at a lot-specific concentration.

Storage&Handling: The antibody solution should be stored undiluted between 2°C and 8°C, and protected from prolonged exposure to light. Do not freeze.

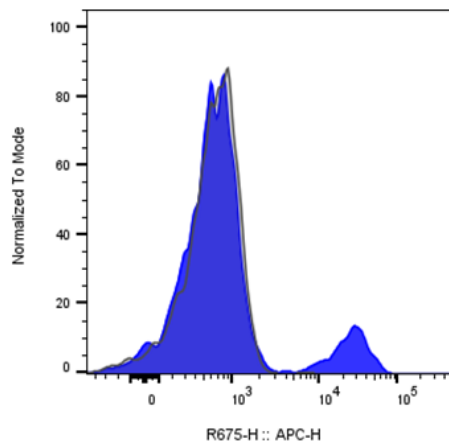
Recommended Usage: For flow cytometric staining, it is recommended to use 5 µL of this reagent per 0.5-1.0 million cells in a 100 µL volume. Optimal reagent performance should be determined by titration for each specific application.

Excitation Laser: Red Laser (633 nm)

Background Information

CD19 is a 95 kD type I transmembrane glycoprotein also known as B4. It is a member of the immunoglobulin superfamily expressed on B-cells (from pro-B to blastoid B cells, absent on plasma cells) and follicular dendritic cells. CD19 is involved in B cell development, activation, and differentiation. CD19 forms a complex with CD21 (CR2) and CD81 (TAPA-1), and functions as a BCR co-receptor.

Product Data



Human peripheral blood lymphocytes stained with either iF647 Anti-Human CD19 clone 019BB (Blue histogram) or an isotype control (gray histogram).