

## Technical Data Sheet

### Anti-Human CD3

**Catalog Number:** 106901, 106902

**Size:** 100 ug, 500 ug

**Target Name:** CD3, T3, CD3?

**Regulatory Status:** RUO

#### Product Details

---

**Clone:** Hit3a

**Application:** FC

**Reactivity:** Human

**Format:** Purified

**Isotype:** Mouse IgG2a

**Antibody Type:** Monoclonal

**Formulation:** Phosphate-buffered solution, pH 7.2, containing 0.09% sodium azide

**Protein Concentration:** 0.5 mg/mL

**Storage and Handling:** The antibody solution should be stored between 2°C and 8°C

**Recommended Usage:** For flow cytometric staining, it is recommended to use less than 0.25 ug of this reagent per 0.5-1.0 million cells in a 100 µL volume. Optimal reagent performance should be determined by titration for each specific application

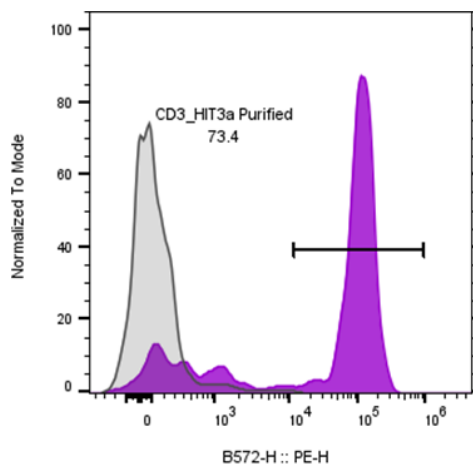
#### Background Information

---

CD3 (cluster of differentiation 3) is a protein complex and T cell co-receptor. CD3? is a 20 kD chain of the CD3/T-cell receptor (TCR) complex which is composed of two CD3?, one CD3?, one CD3?, one CD3? (CD247), and a T-cell receptor (?? or ??) heterodimer. It is found on all mature T lymphocytes, NK-T cells, and some thymocytes. CD3, also known as T3, is a member of the immunoglobulin superfamily that plays a role in antigen recognition, signal transduction, and T cell activation.

#### Product Data

---



Human peripheral blood lymphocytes stained either with purified anti-human CD3 clone Hit3a (purple histogram) or an isotype control (gray histogram), followed by PE anti-mouse IgG 2nd antibody.