

## Technical Data Sheet

### Anti-human CD22

**Catalog Number:** 100601, 100602

**Size:** 100 ug, 500 ug

**Target Name:** CD22, BL-CAM, Siglec-2

**Regulatory Status:** RUO

#### Product Details

---

**Clone:** HIB22

**Application:** FC

**Reactivity:** Human

**Format:** Purified

**Isotype:** Mouse IgG1

**Antibody Type:** Monoclonal

**Formulation:** Phosphate-buffered solution, pH 7.2, containing 0.09% sodium azide

**Protein Concentration:** 0.5 mg/mL

**Storage&Handling:** The antibody solution should be stored between 2°C and 8°C

**Recommended Usage:** For flow cytometric staining, it is recommended to use less than 0.2 ug of this reagent per 0.5-1.0 million cells in a 100 µL volume. Optimal reagent performance should be determined by titration for each specific application.

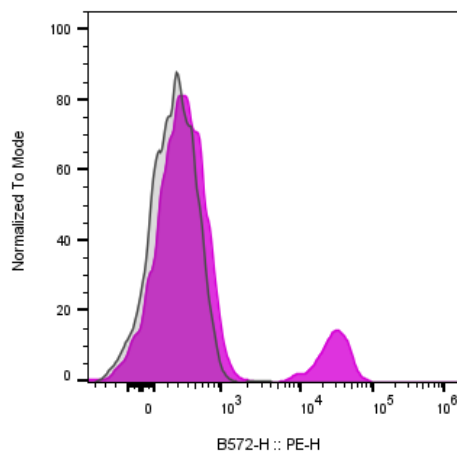
#### Background Information

---

CD22 is a type I transmembrane glycoprotein and a member of the immunoglobulin superfamily, belonging to the sialoadhesin (Siglec) subgroup. It is also known as Siglec-2 and B-lymphocyte cell adhesion molecule (BL-CAM). The CD22 gene undergoes alternative splicing to produce two polypeptide chains, CD22? (~130 kDa) and CD22? (~140 kDa).

#### Product Data

---



Human peripheral blood lymphocytes stained with either Anti-human CD22 clone HIB22 (purple histogram) or an isotype control (gray histogram), followed by SA-PE.