

Technical Data Sheet

Anti-human CD22

Catalog Number: 100601, 100602

Size: 100 ug, 500 ug

Target Name: CD22, BL-CAM, Siglec-2

Regulatory Status: RUO

Product Details

Clone: HIB22

Application: FC

Reactivity: Human

Format: Purified

Isotype: Mouse IgG1

Antibody Type: Monoclonal

Formulation: Phosphate-buffered solution, pH 7.2, containing 0.09% sodium azide

Protein Concentration: 0.5 mg/mL

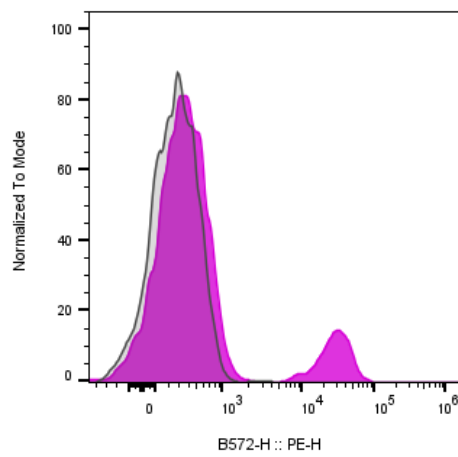
Storage&Handling: The antibody solution should be stored between 2°C and 8°C

Recommended Usage: For flow cytometric staining, it is recommended to use less than 0.2 ug of this reagent per 0.5-1.0 million cells in a 100 µL volume. Optimal reagent performance should be determined by titration for each specific application.

Background Information

CD22 is a type I transmembrane glycoprotein and a member of the immunoglobulin superfamily, belonging to the sialoadhesin (Siglec) subgroup. It is also known as Siglec-2 and B-lymphocyte cell adhesion molecule (BL-CAM). The CD22 gene undergoes alternative splicing to produce two polypeptide chains, CD22? (~130 kDa) and CD22? (~140 kDa).

Product Data



Human peripheral blood lymphocytes stained with either Anti-human CD22 clone HIB22 (purple histogram) or an isotype control (gray histogram), followed by SA-PE.