

## Technical Data Sheet

### iF488 Anti-Human CD22

**Catalog Number:** 100605, 100606

**Size:** 25 tests, 100 tests

**Target Name:** CD22, BL-CAM, Siglec-2

**Regulatory Status:** RUO

#### Product Details

---

**Clone:** HIB22

**Application:** FC

**Reactivity:** Human

**Format:** iF488

**Isotype:** Mouse IgG1

**Antibody Type:** Monoclonal

**Formulation:** Phosphate-buffered solution, pH 7.2, containing 0.09% sodium azide and 0.2% (w/v) BSA

**Protein Concentration:** Supplied at a lot-specific concentration.

**Storage&Handling:** The antibody solution should be stored undiluted between 2°C and 8°C, and protected from prolonged exposure to light. Do not freeze.

**Recommended Usage:** For flow cytometric staining, it is recommended to use 5 uL of this reagent per 0.5-1.0 million cells in a 100 µL volume. Optimal reagent performance should be determined by titration for each specific application.

**Excitation Laser:** Blue Laser (488 nm)

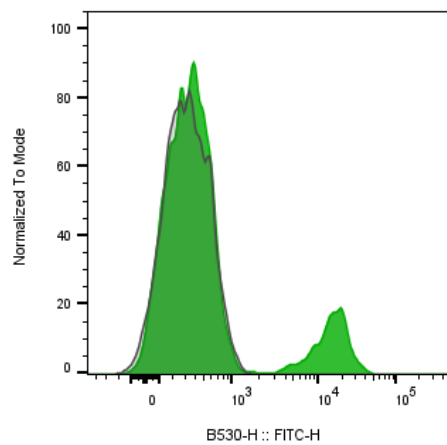
#### Background Information

---

CD22 is a type I transmembrane glycoprotein and a member of the immunoglobulin superfamily, belonging to the sialoadhesin (Siglec) subgroup. It is also known as Siglec-2 and B-lymphocyte cell adhesion molecule (BL-CAM). The CD22 gene undergoes alternative splicing to produce two polypeptide chains, CD22? (~130 kDa) and CD22? (~140 kDa).

#### Product Data

---



Human peripheral blood lymphocytes stained with either iF488 Anti-human CD22 clone HIB22 (green histogram) or an isotype control (gray histogram).