

## Technical Data Sheet

### Biotin Mouse IgM isotype control

**Catalog Number:** 302002  
**Size:** 25 ug  
**Target Name:** Mouse IgM Isotype control  
**Regulatory Status:** RUO

#### Product Details

---

**Clone:** MM-30  
**Application:** FC  
**Reactivity:** N/A  
**Format:** Biotin  
**Isotype:** Mouse IgM  
**Antibody Type:** Monoclonal  
**Formulation:** Phosphate-buffered solution, pH 7.2, containing 0.09% sodium azide  
**Protein Concentration:** 0.2 mg/mL  
**Storage&Handling:** Store the antibody undiluted at 2°C to 8°C.  
**Recommended Usage:** Use at concentrations comparable to those used for the target-specific antibody

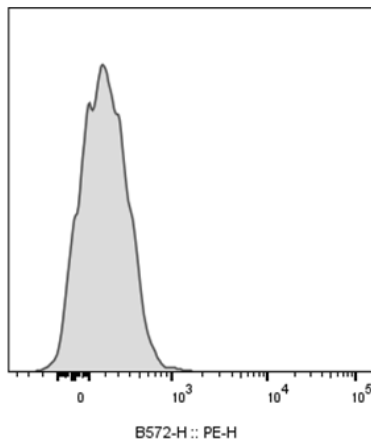
#### Background Information

---

The clone of MM-30 1 antibody is mouse isotype IgM, k. The MM-30 immunoglobulin has unknown specificity. It is chosen as an isotype control after screening on a variety of resting, activated, live, and fixed mouse, rat and human tissues.

#### Product Data

---



Human granulocytes were stained with Biotin Mouse IgM isotype control clone MM-30 (gray histogram), followed by SA-PE.