

Technical Data Sheet

Anti-Human CD11b

Catalog Number: 100501, 100502

Size: 100 ug, 500 ug

Target Name: CD11b, Integrin α M chain, C3bIR, CR3, Mac-1, Mo1, ITGAM

Regulatory Status: RUO

Product Details

Clone: 011bAM1

Application: FC

Reactivity: Human

Format: Purified

Isotype: Mouse IgG1

Antibody Type: Monoclonal

Formulation: Phosphate-buffered solution, pH 7.2, containing 0.09% sodium azide

Protein Concentration: 0.5 mg/mL

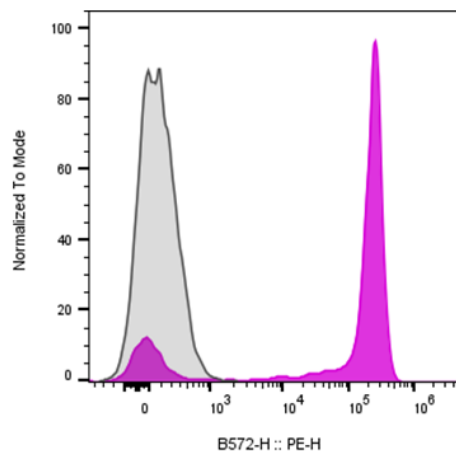
Storage&Handling: The antibody solution should be stored between 2°C and 8°C

Recommended Usage: For flow cytometric staining, it is recommended to use less than 0.2 ug of this reagent per 0.5-1.0 million cells in a 100 μ L volume. Optimal reagent performance should be determined by titration for each specific application

Background Information

Integrin Alpha M (ITGAM); the alpha subunit of Mac-1 (Macrophage-1 antigen), the CR3 complement receptor which consists of CD11b and CD18. CR3 is a human cell surface receptor, found on polymorphonuclear leukocytes (mostly neutrophils), NK cells, and mononuclear phagocytes like macrophages, which is capable of recognizing and binding to many molecules found on the surfaces of invading bacteria. Binding to the receptor causes phagocytosis and destruction of the foreign cell.

Product Data



Human granulocytes were stained either with purified Anti-Human CD11b clone 011bAM1 (color-filled histogram) or an isotype control (gray histogram), followed by PE anti-mouse IgG.