

Technical Data Sheet

iF647 Anti-Human CD3

Catalog Number: 106905, 106906

Size: 25 tests, 100 tests

Target Name: CD3, T3, CD3?

Regulatory Status: RUO

Product Details

Clone: Hit3a

Application: FC

Reactivity: Human

Format: iF647

Isotype: Mouse IgG2a

Antibody Type: Monoclonal

Formulation: Phosphate-buffered solution, pH 7.2, containing 0.09% sodium azide and 0.2% (w/v) BSA

Protein Concentration: Supplied at a lot-specific concentration.

Storage and Handling: The antibody solution should be stored undiluted between 2°C and 8°C, and protected from prolonged exposure to light. Do not freeze.

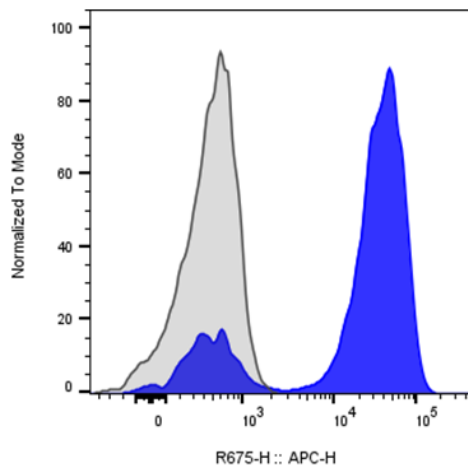
Recommended Usage: For flow cytometric staining, it is recommended to use 5 µL of this reagent per 0.5-1.0 million cells in a 100 µL volume. Optimal reagent performance should be determined by titration for each specific application.

Excitation Laser: Red Laser (633 nm)

Background Information

CD3 (cluster of differentiation 3) is a protein complex and T cell co-receptor. CD3? is a 20 kD chain of the CD3/T-cell receptor (TCR) complex which is composed of two CD3?, one CD3?, one CD3?, one CD3? (CD247), and a T-cell receptor (?? or ??) heterodimer. It is found on all mature T lymphocytes, NK-T cells, and some thymocytes. CD3, also known as T3, is a member of the immunoglobulin superfamily that plays a role in antigen recognition, signal transduction, and T cell activation.

Product Data



Human peripheral blood lymphocytes stained with iF647 anti-Human CD3 clone HIT3a (blue histogram) or an isotype control (gray histogram).