

Technical Data Sheet

iF647 Anti-Human CD29

Catalog Number: 107203, 107204

Size: 25 tests, 100 tests

Target Name: CD29, Integrin β 1 chain, VLA- β chain, gpIIa, ITGB1

Regulatory Status: RUO

Product Details

Clone: K20

Application: FC

Reactivity: Human

Format: iF647

Isotype: Mouse IgG2a

Antibody Type: Monoclonal

Formulation: Phosphate-buffered solution, pH 7.2, containing 0.09% sodium azide and 0.2% (w/v) BSA

Protein Concentration: Supplied at a lot-specific concentration.

Storage and Handling: The antibody solution should be stored undiluted between 2°C and 8°C, and protected from prolonged exposure to light. Do not freeze.

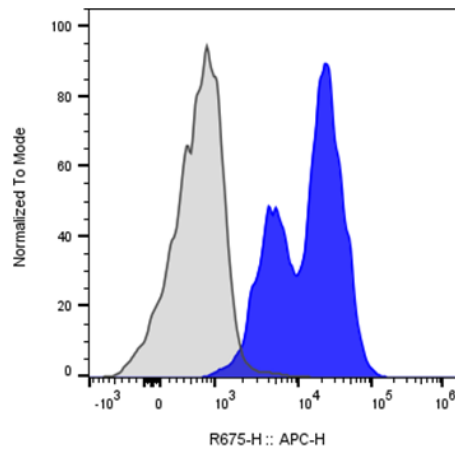
Recommended Usage: For flow cytometric staining, it is recommended to use 5 μ L of this reagent per 0.5-1.0 million cells in a 100 μ L volume. Optimal reagent performance should be determined by titration for each specific application.

Excitation Laser: Red Laser (633 nm)

Background Information

Integrin beta-1 (ITGB1), also known as CD29, is a cell surface receptor that in humans is encoded by the ITGB1 gene.[5] This integrin associates with integrin alpha 1 and integrin alpha 2 to form integrin complexes which function as collagen receptors. Integrin beta 1 is expressed as at least four different isoforms. In cardiac muscle and skeletal muscle, the integrin beta-1D isoform is specifically expressed, and localizes to costameres, where it aids in the lateral force transmission from the Z-discs to the extracellular matrix. Abnormal levels of integrin beta-1D have been found in limb girdle muscular dystrophy and polyneuropathy.

Product Data



Human peripheral blood lymphocytes stained with iF647 Anti-Human CD29 clone K20 (blue histogram) or an isotype control (gray histogram).