

## PB Rabbit IgG, $\kappa$ 2 Isotype Control Antibody

|                           |  |
|---------------------------|--|
| <b>Catalog Number:</b>    | 301811, 301812                         |
| <b>Size:</b>              | 25 ug, 100 ug                          |
| <b>Target Name:</b>       | Rabbit IgG, $\kappa$ 2 Isotype Control |
| <b>Regulatory Status:</b> | RUO                                    |

### PRODUCT DETAILS

---

|                               |  |
|-------------------------------|--|
| <b>Clone:</b>                 | MOPC-21-B2   |
| <b>Application:</b>           | Flow Cytometry   |
| <b>Reactivity:</b>            | N/A  |
| <b>Format:</b>                | PB   |
| <b>Isotype:</b>               | Rabbit IgG, $\kappa$ 2   |
| <b>Antibody Type:</b>         | Monoclonal   |
| <b>Formulation:</b>           | Phosphate-buffered solution, pH 7.2, containing 0.09% sodium azide and 0.2% (w/v) BSA  |
| <b>Protein Concentration:</b> | 0.2mg/mL   |
| <b>Storage&amp;Handling:</b>  | The antibody solution should be stored undiluted between 2°C and 8°C, and protected from prolonged exposure to light. Do not freeze.                         |
| <b>Recommended Usage:</b>     | Use at concentrations comparable to those used for the target-specific antibody. Pacific Blue has an excitation max at 404 nm and an emission max at 455 nm. |
| <b>Excitation Laser:</b>      | Violet laser (405nm)   |
| <b>RRID:</b>                  | AB_3739217   |

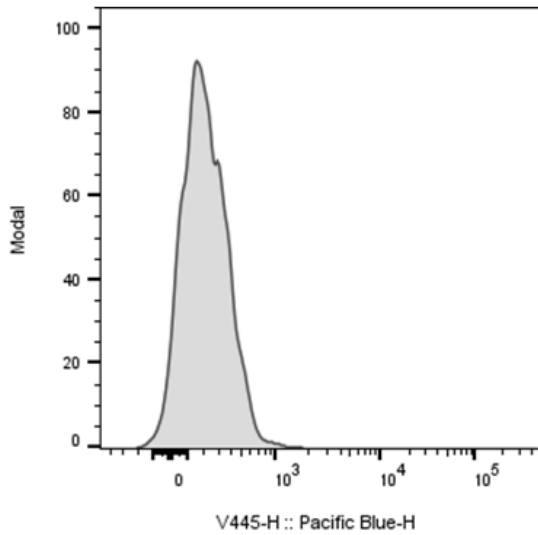
### BACKGROUND INFORMATION

---

This antibody is a clone of the MOPC-21 variable region with a rabbit IgG,  $\kappa$ 2 isotype. MOPC-21 immunoglobulin has an unknown antigen specificity and is commonly used as an isotype control. It was selected based on screening across a variety of resting and activated cells, as well as live and fixed tissues from mouse, rat, and human sources.

PRODUCT DATA

---



Human PBMC were stained PB Rabbit IgG,  $\kappa$ 2 Isotype Control, clone MOPC-21-B2 (gray histogram).