

Technical Data Sheet

iF647 Mouse IgM isotype control

Catalog Number: 302003

Size: 25 ug

Target Name: Mouse IgM Isotype control

Regulatory Status: RUO

Product Details

Clone: MM-30

Application: FC

Reactivity: N/A

Format: iF647

Isotype: Mouse IgM

Antibody Type: Monoclonal

Formulation: Phosphate-buffered solution, pH 7.2, containing 0.09% sodium azide and 0.2% (w/v) BSA

Protein Concentration: 0.2mg/mL

Storage&Handling: Store the antibody undiluted at 2°C to 8°C.

Recommended Usage: Use at concentrations comparable to those used for the target-specific antibody

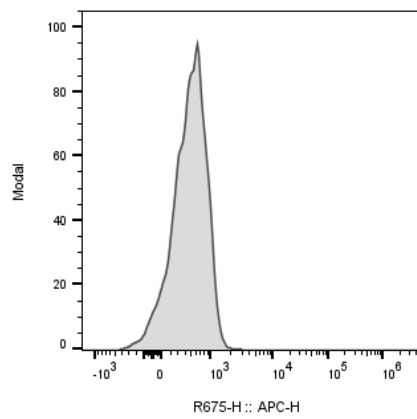
Excitation Laser: Red Laser (633 nm)

Release Date: Nov-25

Background Information

The clone of MM-30 1 antibody is mouse isotype IgM, k. The MM-30 immunoglobulin has unknown specificity. It is chosen as an isotype control after screening on a variety of resting, activated, live, and fixed mouse, rat and human tissues.

Product Data



Human PBMC were stained with iF647 Mouse IgM isotype control, clone MM-30 (gray histogram).