

Technical Data Sheet

iF647 Anti-Human CD4

Catalog Number: 100203, 100204

Size: 25 tests, 100 tests

Target Name: CD4, T4, Leu3a

Regulatory Status: RUO

Product Details

Clone: 004AB

Application: FC

Reactivity: Human

Format: iF647

Isotype: Rabbit IgG

Antibody Type: Monoclonal

Formulation: Phosphate-buffered solution, pH 7.2, containing 0.09% sodium azide and 0.2% (w/v) BSA

Protein Concentration: Supplied at a lot-specific concentration.

Storage&Handling: The antibody solution should be stored undiluted between 2°C and 8°C, and protected from prolonged exposure to light. Do not freeze.

Recommended Usage: For flow cytometric staining, it is recommended to use 5 µL of this reagent per 0.5-1.0 million cells in a 100 µL volume. Optimal reagent performance should be determined by titration for each specific application.

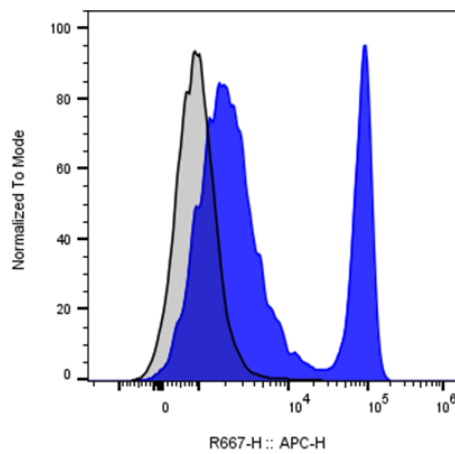
Excitation Laser: Red Laser (633 nm)

Release Date: Dec-25

Background Information

CD4 (cluster of differentiation 4) is a glycoprotein that serves as a co-receptor for the T-cell receptor (TCR). CD4 is found on the surface of immune cells such as helper T cells, monocytes, macrophages, and dendritic cells. CD4 is a member of the immunoglobulin superfamily. CD4+ T helper cells are white blood cells that are an essential part of the human immune system. They are often referred to as CD4 cells, T-helper cells or T4 cells.

Product Data



Human peripheral blood lymphocytes was stained with iF647 Anti-Human CD4 clone 004AB (color-filled histogram) or an isotype control (gray histogram) .