

Technical Data Sheet

PE/Cyanine7 Anti-Human CD127

Catalog Number: 104911, 104912

Size: 25 tests, 100 tests

Target Name: CD127, IL-7 receptor γ chain, IL-7R γ

Regulatory Status: RUO

Product Details

Clone: 127AM1

Application: FC

Reactivity: Human

Format: PE/Cyanine7

Isotype: Mouse IgG1

Antibody Type: Monoclonal

Formulation: Phosphate-buffered solution, pH 7.2, containing 0.09% sodium azide and 0.2% (w/v) BSA

Protein Concentration: Supplied at a lot-specific concentration.

Storage&Handling: The antibody solution should be stored undiluted between 2°C and 8°C, and protected from prolonged exposure to light. Do not freeze.

Recommended Usage: For flow cytometric staining, it is recommended to use 5 μ L of this reagent per 0.5-1.0 million cells in a 100 μ L volume. Optimal reagent performance should be determined by titration for each specific application.

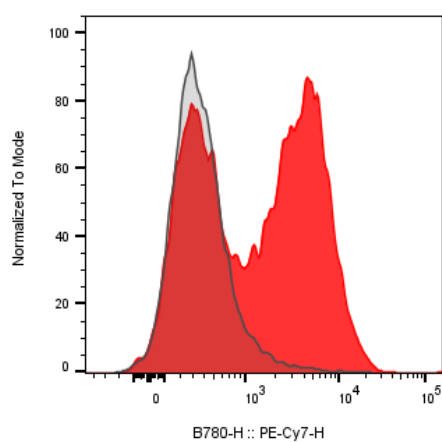
Excitation Laser: Blue Laser (488 nm), Green Laser (532 nm)/Yellow-Green Laser (561 nm)

Release Date: Dec-25

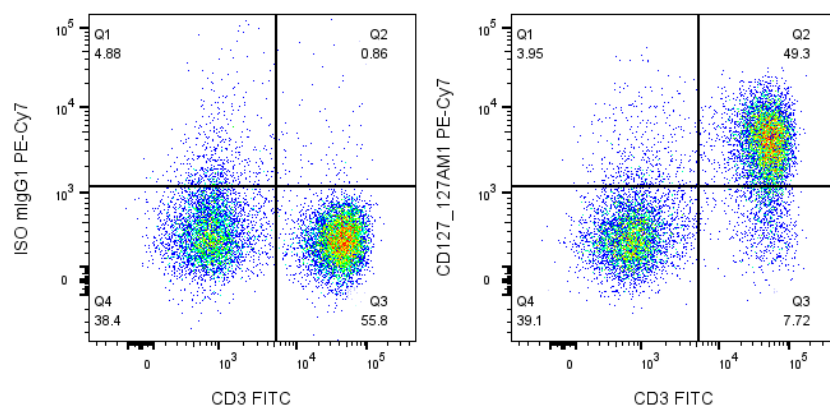
Background Information

The interleukin-7 receptor is a protein found on the surface of cells. It is made up of two different smaller protein chains - i.e. it is a heterodimer, and consists of two subunits, interleukin-7 receptor- γ (CD127) and common- γ chain receptor (CD132). The common- γ chain receptors is shared with various cytokines, including interleukin-2, -4, -9, and -15. Interleukin-7 receptor is expressed on various cell types, including naive and memory T cells and many others. Interleukin-7 receptor has been shown to play a critical role in the development of immune cells called lymphocytes.

Product Data



Human peripheral blood lymphocytes was stained with PE/Cyanine7 Anti-Human CD127 clone 127AM1 (color-filled) or an isotype control (gray histogram).



Human peripheral blood lymphocytes stained with FITC Anti-human CD3 and either PE/Cyanine7 Anti-Human CD127 clone 127AM1 (right panel) or an isotype control (left panel).