

Technical Data Sheet

Biotin Anti-Human CD3

Catalog Number: 107713, 107714

Size: 25 ug, 100 ug

Target Name: CD3, T3, CD3?

Regulatory Status: RUO

Product Details

Clone: OKT3

Application: FC

Reactivity: Human

Format: Biotin

Isotype: Mouse IgG2a

Antibody Type: Monoclonal

Formulation: Phosphate-buffered solution, pH 7.2, containing 0.09% sodium azide

Protein Concentration: 0.2 mg/mL

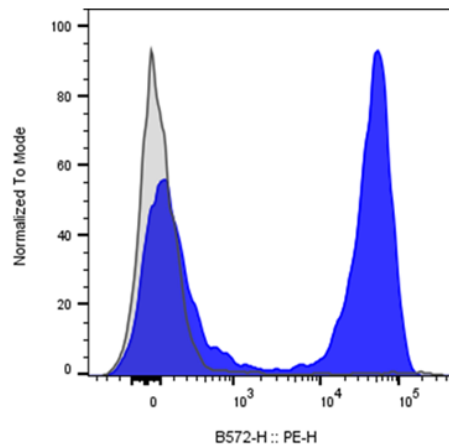
Storage and Handling: The antibody solution should be stored between 2°C and 8°C

Recommended Usage: For flow cytometric staining, it is recommended to use less than 0.1 ug of this reagent per 0.5-1.0 million cells in a 100 µL volume. Optimal reagent performance should be determined by titration for each specific application

Background Information

CD3 (cluster of differentiation 3) is a protein complex and T cell co-receptor that is involved in activating both the cytotoxic T cell (CD8+ naive T cells) and T helper cells (CD4+ naive T cells). It is composed of four distinct chains. In mammals, the complex contains a CD3 ϵ chain, a CD3 δ chain, and two CD3 γ chains. CD3 γ chains are highly related cell-surface proteins of the immunoglobulin superfamily that plays a role in antigen recognition, signal transduction, and T cell activation.

Product Data



Human peripheral blood lymphocytes stained with either biotinylated anti-human CD3 clone OKT3 (blue histogram) or an isotype control (gray histogram), followed by SA-PE.