

## Technical Data Sheet

### Anti-Human CD4

**Catalog Number:** 107801, 107802

**Size:** 100 ug, 500 ug

**Target Name:** CD4, T4, Leu3a

**Regulatory Status:** RUO

#### Product Details

---

**Clone:** OKT4-Rec

**Application:** FC

**Reactivity:** Human

**Format:** Purified

**Isotype:** Mouse IgG2a

**Antibody Type:** Monoclonal

**Formulation:** Phosphate-buffered solution, pH 7.2, containing 0.09% sodium azide

**Protein Concentration:** 0.5 mg/mL

**Storage and Handling:** The antibody solution should be stored between 2°C and 8°C

**Recommended Usage:** For flow cytometric staining, it is recommended to use less than 0.25 ug of this reagent per 0.5-1.0 million cells in a 100 µL volume. Optimal reagent performance should be determined by titration for each specific application

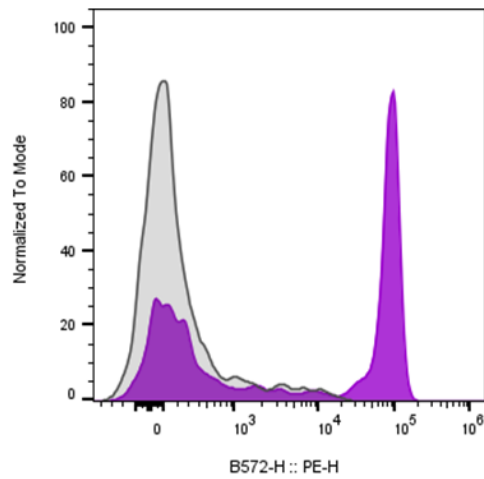
#### Background Information

---

CD4 (cluster of differentiation 4) is a glycoprotein that serves as a co-receptor for the T-cell receptor (TCR). CD4 is found on the surface of immune cells such as helper T cells, monocytes, macrophages, and dendritic cells. CD4 is a member of the immunoglobulin superfamily. CD4+ T helper cells are white blood cells that are an essential part of the human immune system. They are often referred to as CD4 cells, T-helper cells or T4 cells.

#### Product Data

---



Human peripheral blood lymphocytes stained either with purified anti-human CD4 clone OKT4-Rec (purple histogram) or an isotype control (gray histogram), followed by PE anti-mouse IgG 2nd antibody.