

iF647 Anti-Human CD197 (CCR7) Antibody

Catalog Number:	110903, 110904
Size:	25 tests, 100 tests
Target Name:	CD197, CCR7, BLR2, CDw197, EB11, CMKBR7
Regulatory Status:	RUO

PRODUCT DETAILS

Clone:	197AR2a
Application:	Flow Cytometry
Reactivity:	Human
Format:	iF647
Isotype:	Rat IgG2a
Antibody Type:	Monoclonal
Formulation:	Phosphate-buffered solution, pH 7.2, containing 0.09% sodium azide and 0.2% (w/v) BSA
Protein Concentration:	Supplied at a lot-specific concentration.
Storage&Handling:	The antibody solution should be stored undiluted between 2°C and 8°C, and protected from prolonged exposure to light. Do not freeze.
Recommended Usage:	For flow cytometric staining, it is recommended to use 5 µL of this reagent per 0.5-1.0 million cells in a 100 µL volume. Optimal reagent performance should be determined by titration for each specific application. iF647 has an excitation max at 656 nm and an emission max at 670 nm.
Excitation Laser:	Red Laser (633 nm)
Isotype Control:	300203
RRID:	AB_3738957

BACKGROUND INFORMATION

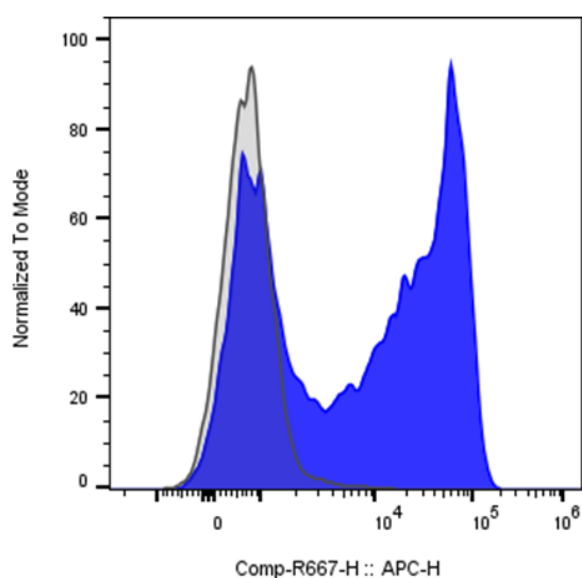
CD197, also known as CCR7 (C-C chemokine receptor type 7), is a G protein-coupled receptor (GPCR) that plays a crucial role in the organization and trafficking of immune cells. This receptor primarily regulates the migration of T cells, B cells, and dendritic cells to lymphoid tissues, thus coordinating immune surveillance and adaptive immune responses. CCR7 is a typical seven-transmembrane GPCR composed of approximately 378 amino acids. It features an extracellular N-terminal region responsible for ligand binding, seven hydrophobic transmembrane helices, three intracellular and extracellular loops, and a cytoplasmic C-terminal domain that interacts with intracellular signaling molecules. Upon ligand binding, CCR7 activates heterotrimeric G proteins that trigger downstream signaling cascades, including PI3K and MAPK pathways, influencing cell migration, survival, and activation. CCR7 primarily binds two chemokines, CCL19 (ELC) and CCL21 (SLC), which are produced in the lymphoid organs and high endothelial venules. These interactions guide lymphocytes and dendritic cells to secondary lymphoid tissues by establishing chemokine

gradients. CCL19 and CCL21 binding induces conformational changes in CCR7 that drive chemotaxis, adhesion, and polarization of responding cells.

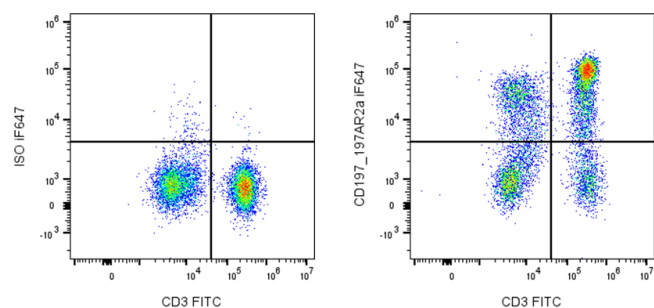
Aberrant CCR7 signaling has been implicated in multiple pathological conditions. In cancer, CCR7 facilitates metastasis by directing tumor cells to lymph nodes, a common route for early dissemination. Elevated CCR7 expression is particularly noted in breast cancer, melanoma, and colorectal carcinoma. In autoimmune disorders such as rheumatoid arthritis and multiple sclerosis, overexpression of CCR7 contributes to the mislocalization and activation of immune cells that perpetuate inflammation. Moreover, certain pathogens manipulate CCR7 pathways to evade immune detection.

Due to its central role in immune cell trafficking, CCR7 is an attractive therapeutic target. Strategies to modulate CCR7 activity include the development of small-molecule inhibitors, neutralizing antibodies, and chemokine decoys to block pathological migration. Conversely, enhancing CCR7 signaling may improve vaccine efficacy and immune reconstitution by optimizing dendritic cell and T cell homing. Ongoing research continues to explore the receptor's potential in immunotherapy, cancer metastasis prevention, and autoimmune disease management.

PRODUCT DATA



Human peripheral blood lymphocytes was stained with iF647 Anti-Human CD197 clone 197AR2a (color-filled) or an isotype control (gray histogram).



Human peripheral blood lymphocytes was co-stained with FITC Anti-Human CD3 (clone OKT3) and either iF647 Anti-Human CD197 clone 197AR2a (right panel) or an isotype control (left panel).

This product is supplied subject to the terms and conditions at www.innocyto.com/web/terms.php and may only be used as provided in the stated terms. Products are for Research Use Only.