

Technical Data Sheet

iF488 Anti-Human CD4

Catalog Number: 107805, 107806

Size: 25 tests, 100 tests

Target Name: CD4, T4, Leu3a

Regulatory Status: RUO

Product Details

Clone: OKT4-Rec

Application: FC

Reactivity: Human

Format: iF488

Isotype: Mouse IgG2a

Antibody Type: Monoclonal

Formulation: Phosphate-buffered solution, pH 7.2, containing 0.09% sodium azide and 0.2% (w/v) BSA

Protein Concentration: Supplied at a lot-specific concentration.

Storage and Handling: The antibody solution should be stored undiluted between 2°C and 8°C, and protected from prolonged exposure to light. Do not freeze.

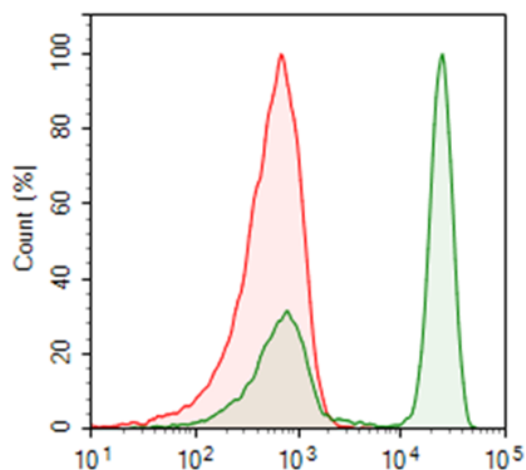
Recommended Usage: For flow cytometric staining, it is recommended to use 5 µL of this reagent per 0.5-1.0 million cells in a 100 µL volume. Optimal reagent performance should be determined by titration for each specific application.

Excitation Laser: Blue Laser (488 nm)

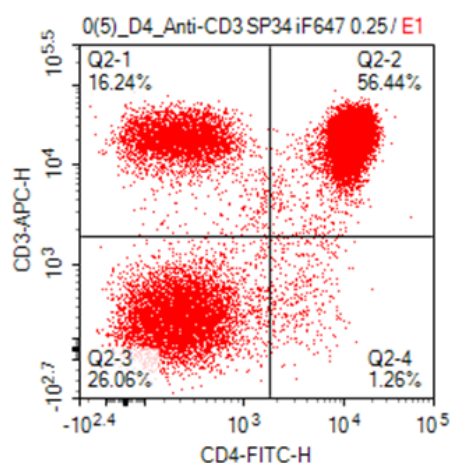
Background Information

CD4 (cluster of differentiation 4) is a glycoprotein that serves as a co-receptor for the T-cell receptor (TCR). CD4 is found on the surface of immune cells such as helper T cells, monocytes, macrophages, and dendritic cells. CD4 is a member of the immunoglobulin superfamily. CD4+ T helper cells are white blood cells that are an essential part of the human immune system. They are often referred to as CD4 cells, T-helper cells or T4 cells.

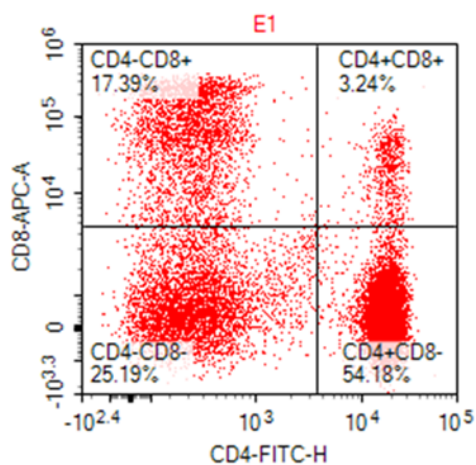
Product Data



Human peripheral blood lymphocytes stained with iF488 anti-human CD4 clone OKT4-Rec or iF488 mouse IgG2a isotype control



Human peripheral blood lymphocytes stained with iF647 anti-human CD3 clone KT3 and iF488 anti-human CD4 clone OKT4-Rec



Human peripheral blood lymphocytes stained with iF647 anti-human CD8 clone OKT8 and iF488 anti-human CD4 clone OKT4-Rec.