

APC Anti-Mouse/Human Ki-67 Antibody

Catalog Number:	202409, 202410
Size:	25 tests, 100 tests
Target Name:	Ki-67, Ki67
Regulatory Status:	RUO

PRODUCT DETAILS

Clone:	K67AR2b
Application:	Intracellular Flow Cytometry
Reactivity:	Human, Mouse
Format:	APC
Isotype:	Rat IgG2b
Antibody Type:	Monoclonal
Formulation:	Phosphate-buffered solution, pH 7.2, containing 0.09% sodium azide and 0.2% (w/v) BSA
Protein Concentration:	Supplied at a lot-specific concentration.
Storage&Handling:	The antibody solution should be stored undiluted between 2°C and 8°C, and protected from prolonged exposure to light. Do not freeze.
Recommended Usage:	For flow cytometric staining, it is recommended to use 5 µL of this reagent per 0.5-1.0 million cells in a 100 µL volume. Optimal reagent performance should be determined by titration for each specific application. APC has an excitation max at 650 nm and an emission max at 660 nm.
Excitation Laser:	Red Laser (633 nm)
Isotype Control:	300307
RRID:	AB_3739094

BACKGROUND INFORMATION

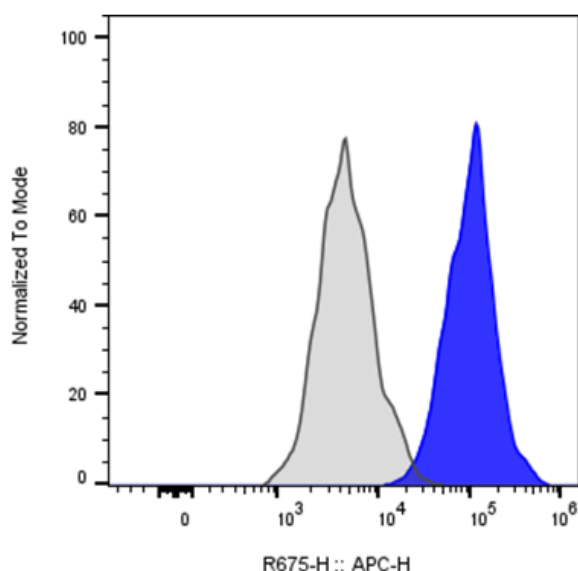
Ki-67 is a nuclear protein strictly associated with cellular proliferation and is widely used as a biomarker in pathology and cancer research. It was first identified in the early 1980s during the search for antigens expressed in proliferating cells. The Ki-67 protein is encoded by the MKI67 gene located on chromosome 10 and is present during all active phases of the cell cycle (G1, S, G2, and M) but absent in resting (G0) cells. Because of this selective expression, Ki-67 serves as a reliable indicator of cell proliferation rates in both normal and tumor tissues.

Structurally, Ki-67 is a large protein, approximately 320-360 kDa, composed of multiple functional domains. It contains a forkhead-associated (FHA) domain and a series of tandem repeats known as the Ki-67 repeats, which are recognized by monoclonal antibodies used in immunohistochemistry. The protein is primarily localized within the nucleolus during interphase and associates with the perichromosomal layer during mitosis. Its exact molecular function remains under study, but evidence suggests that Ki-67 contributes to chromatin organization, particularly in maintaining the structural integrity of chromosomes during cell division.

Ki-67 does not have conventional extracellular ligands, as it functions within the nucleus. However, it interacts with chromatin and several nuclear proteins that regulate the cell cycle and mitotic progression. Through these interactions, Ki-67 participates in organizing heterochromatin and possibly in ribosomal RNA synthesis regulation, facilitating efficient cell proliferation.

Clinically, Ki-67 has substantial value in oncology as a proliferation marker. High Ki-67 labeling indices (a measure of the percentage of Ki-67-positive tumor cells) often correlate with aggressive behavior and poor prognosis in diverse cancers, including breast, prostate, and neuroendocrine tumors. It is routinely used to assess tumor grade, guide therapeutic decisions, and monitor responses to treatment. Although not a direct therapeutic target, Ki-67's presence informs clinicians about tumor growth dynamics and potential responsiveness to cytotoxic therapies. Ongoing research explores whether inhibiting pathways regulating Ki-67 expression or function could complement conventional anticancer strategies, potentially yielding more selective antiproliferative therapies in the future.

PRODUCT DATA



RAW267.4 were stained with either APC Anti-Human/Mouse Ki-67 clone K67AR2b (color-filled histogram) or an isotype control (gray histogram).

This product is supplied subject to the terms and conditions at www.innocyto.com/web/terms.php and may only be used as provided in the stated terms. Products are for Research Use Only.