

## iF647 Anti-Mouse F4/80 Antibody

<b>Catalog Number:</b>	202505, 202506
<b>Size:</b>	25 tests, 100 tests
<b>Target Name:</b>	EMR1, Ly71
<b>Regulatory Status:</b>	RUO

### PRODUCT DETAILS

---

<b>Clone:</b>	BM8
<b>Application:</b>	Flow Cytometry
<b>Reactivity:</b>	Mouse
<b>Format:</b>	iF647
<b>Isotype:</b>	Rat IgG2a
<b>Antibody Type:</b>	Monoclonal
<b>Formulation:</b>	Phosphate-buffered solution, pH 7.2, containing 0.09% sodium azide and 0.2% (w/v) BSA
<b>Protein Concentration:</b>	Supplied at a lot-specific concentration.
<b>Storage&amp;Handling:</b>	The antibody solution should be stored undiluted between 2°C and 8°C, and protected from prolonged exposure to light. Do not freeze.
<b>Recommended Usage:</b>	For flow cytometric staining, it is recommended to use 5 µL of this reagent per 0.5-1.0 million cells in a 100 µL volume. Optimal reagent performance should be determined by titration for each specific application. iF647 has an excitation max at 656 nm and an emission max at 670 nm.
<b>Excitation Laser:</b>	Red Laser (633 nm)
<b>Isotype Control:</b>	300203

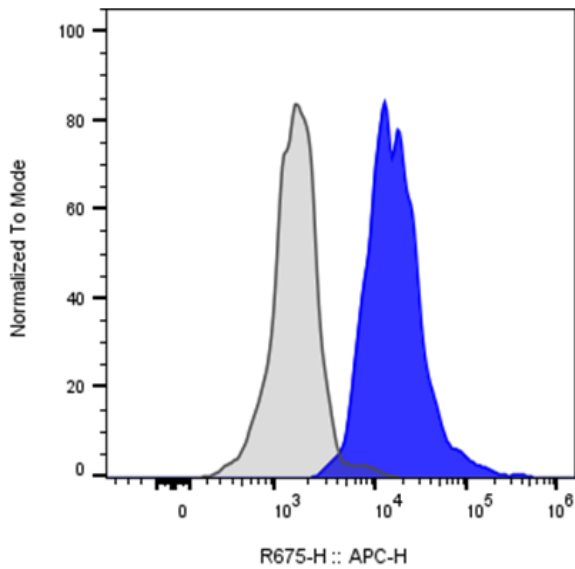
### BACKGROUND INFORMATION

---

F4/80 is a 160 kDa cell surface glycoprotein and a member of the epidermal growth factor (EGF)-transmembrane 7 (TM7) family of adhesion G-protein-coupled receptors. Also referred to as EMR1 or Ly71, F4/80 is a well-established marker of murine macrophages. It is broadly expressed on the majority of tissue-resident macrophages, including peritoneal macrophages, lung macrophages, gut lamina propria macrophages, thymic and bone marrow stromal macrophages, splenic red pulp macrophages, Kupffer cells in the liver, and Langerhans cells in the skin. Notably, F4/80 is absent from macrophages located in T cell zones of the spleen, lymph nodes, and Peyer's patches. It has also been detected on a subset of dendritic cells, reflecting its heterogeneous expression pattern that can vary with macrophage maturation and activation

PRODUCT DATA

---



RAW267.4 were stained with either iF647 Anti-Mouse F4/80 clone BM8 (color-filled histogram) or an isotype control (gray histogram).