

iF647 Rat IgM Isotype Control Antibody

Catalog Number:	302702
Size:	25 ug
Target Name:	Rat IgM isotype control
Regulatory Status:	RUO

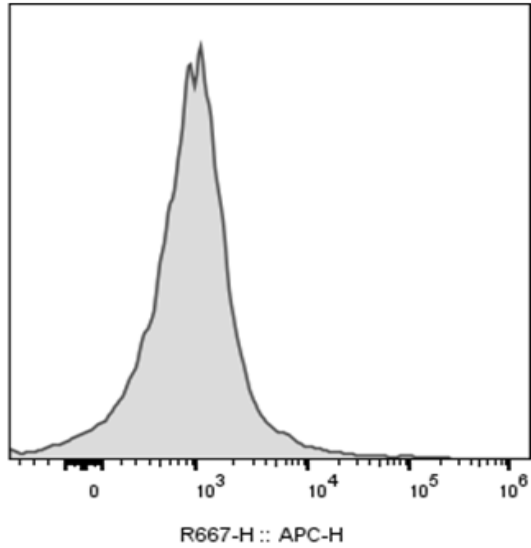
PRODUCT DETAILS

Clone:	RTK2118
Application:	Flow Cytometry
Reactivity:	N/A
Format:	iF647
Isotype:	Rat IgM
Antibody Type:	Monoclonal
Formulation:	Phosphate-buffered solution, pH 7.2, containing 0.09% sodium azide and 0.2% (w/v) BSA
Protein Concentration:	0.2 mg/mL
Storage&Handling:	Store the antibody undiluted at 2°C to 8°C.
Recommended Usage:	Use at concentrations comparable to those used for the target-specific antibody. iF647 has an excitation max at 656 nm and an emission max at 670 nm.
Excitation Laser:	Red Laser (633 nm)
RRID:	AB_3739231

BACKGROUND INFORMATION

Immunoglobulin M (IgM) is the largest antibody isotype and the first produced during an initial immune response. Structurally, it forms a pentamer of five immunoglobulin units, giving it a high molecular weight of about 900 kDa and up to ten antigen-binding sites, though not all can engage simultaneously. Because of its size, IgM remains primarily in the serum and is produced largely in the spleen. Rat IgM functions similarly, serving as an early, broad-acting antibody produced by rat B cells to recognize and neutralize pathogens. It is widely used in research—as a control reagent, in diagnostic assays, and in studies of infection and immunity. Various established laboratory methods exist for producing and purifying rat IgM, making it a valuable tool for advancing immunological understanding and supporting the development of new disease treatments

PRODUCT DATA



Mouse splenocytes were stained with iF647 Anti-Rat IgM clone RTK2118, an isotype control (gray histogram). Note that Rat IgM isotype control needs to be used at lower concentration around 0.1 ug/test.

This product is supplied subject to the terms and conditions at www.innocyto.com/web/terms.php and may only be used as provided in the stated terms. Products are for Research Use Only.