

## FITC Anti-Human CD38 Antibody

<b>Catalog Number:</b>	101011, 101012
<b>Size:</b>	25 tests, 100 tests
<b>Target Name:</b>	CD38, gp45, Cyclic ADP-ribose hydrolase 1,T10, ADP-ribosyl cyclase
<b>Regulatory Status:</b>	RUO

### PRODUCT DETAILS

---

<b>Clone:</b>	HB-7
<b>Application:</b>	Flow Cytometry
<b>Reactivity:</b>	Human
<b>Format:</b>	FITC
<b>Isotype:</b>	Mouse IgG1
<b>Antibody Type:</b>	Monoclonal
<b>Formulation:</b>	Phosphate-buffered solution, pH 7.2, containing 0.09% sodium azide and 0.2% (w/v) BSA
<b>Protein Concentration:</b>	Supplied at a lot-specific concentration.
<b>Storage&amp;Handling:</b>	The antibody solution should be stored undiluted between 2°C and 8°C, and protected from prolonged exposure to light. Do not freeze.
<b>Recommended Usage:</b>	For flow cytometric staining, it is recommended to use 5 uL of this reagent per 0.5-1.0 million cells in a 100 µL volume. Optimal reagent performance should be determined by titration for each specific application.
<b>Excitation Laser:</b>	Blue Laser (488 nm)

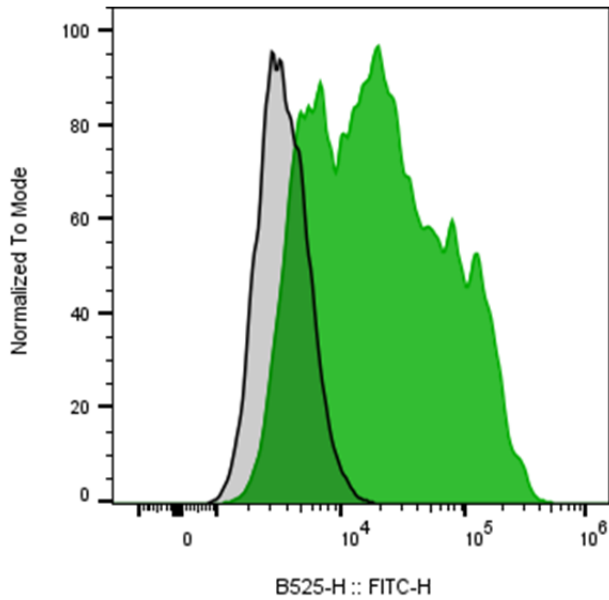
### BACKGROUND INFORMATION

---

CD38 (ADP-ribosyl cyclase 1) is a Type II membrane protein involved in calcium signaling through the conversion of NAD(P)<sup>+</sup> into cADPR, NAADP<sup>+</sup>, and ADP-ribose. It is broadly expressed in immune cells and various tissues, and is linked to immune regulation, cancer, and metabolic disorders. CD38 also serves as a prognostic marker in leukemia.

PRODUCT DATA

---



Human peripheral blood lymphocytes stained with either FITC Anti-Human CD38 Clone HB-7 (color-filled histogram) or an isotype control (gray histogram).

This product is supplied subject to the terms and conditions at [www.innocyto.com/web/terms.php](http://www.innocyto.com/web/terms.php) and may only be used as provided in the stated terms. Products are for Research Use Only.